



Appendices

AP

PAGE INTENTIONALLY LEFT BLANK

CONTENTS

Community Profile	A
Recreations Trends	B
City Inventory	C
School District Inventory	D
Focus Groups	E
Stakeholder Interviews	F
Pop-Up Events Summary	G
Wayfinding Signage System	H



Community Profile

- ▶ *DEMOGRAPHIC ANALYSIS*
- ▶ *ECONOMIC ANALYSIS*
- ▶ *COMMUNITY HEALTH ANALYSIS*

Overview

A critical step in the PROS planning process is understanding the composition of the community and evaluating how the community is served by its parks system. This section provides an overview of Hermiston's regional context and planning area and summarizes the local demographic composition. Regional context is important in considering the environmental, political, and demographic opportunities and constraints that have bearing on parks planning. In addition, analyzing trends in demographic composition informs policy decisions and ensures that park and recreation facilities best serve the diverse needs of varied populations.

DEMOGRAPHIC ANALYSIS

Trends in population growth, age, housing, health and ethnicity are all key factors of understanding a community's composition. The following data is pulled from Portland State University's Population Research Center, the Umatilla County Health

Assessment, and American Fact Finder, a part of the United States Census. Current population data and forecasts from PSU are provided for 2019 and onward. The Umatilla County Health Assessment is based on survey data collected from October-December 2018. Data from American Fact Finder is drawn from the most current data available, which may vary. Data is partly supplied through the 2010 Census. As the Census is a decennial event, the American Community Survey (ACS) is a supplemental nationwide survey which provides communities perspective into how they are changing before the next official Census. The ACS collects information such as age, race, income, and other important data. The ACS produces 5-year estimates annually for all geographic areas. In the case of Hermiston, ACS data is available for the period of 2013-2017, hence referred to as 2017 data. Hermiston's demographic trends are influenced primarily by its employment sectors, which include retail, manufacturing, agriculture, and health care. Hermiston's population is growing steadily.

TABLE A.1. HERMISTON HISTORICAL AND FUTURE POPULATION FORECASTS¹

Year	2005	2010	2015	2020	2025	2030	2035	2040	2045
Population	13,154	16,745	17,520	21,395	22,414	23,540	24,784	26,045	27,257

TABLE A.2. UMATILLA COUNTY HISTORICAL AND FUTURE POPULATION FORECASTS¹

Year	2005	2010	2015	2020	2025	2030	2035	2040	2045
Population	74,226	76,000	78,887	83,359	88,366	93,673	98,820	103,809	108,860

TABLE A.3. OREGON HISTORICAL AND FUTURE POPULATION FORECASTS¹

Year	2005	2010	2015	2020	2025	2030	2035	2040	2045
Population	3,626,900	3,837,300	4,001,600	4,252,100	4,516,200	4,768,000	4,995,200	5,203,000	5,398,800

Population Growth

With a population of 21,185 (2019), Hermiston is the largest city in Eastern Oregon. From 2010 to 2015, Hermiston experienced a 4.6% population increase. Based on coordinated county/city population projections, Hermiston's population is expected to increase by 27.4% over the next 25 years, which is comparable to the growth the city experienced during the last 10 years (27.8%). Table A.1 summarizes historical and projected future city population. With a population of 78,383 (2019), Umatilla County is smaller than the average-sized county in Oregon but it is the largest county in Eastern Oregon. From 2010 to 2015, Umatilla County experienced a 3.8%

population increase. Based on coordinated county projections, Umatilla County's population is expected to increase by 31% over the next 25 years, which is significantly higher than growth rates during the last 15 years (12.3%). Table A.2 summarizes historical and projected future county population.

Oregon's current population is approximately 4,232,000 (2019). From 2010 to 2015, Oregon experienced a 4.3% population increase. Based on coordinated projections, Oregon's population is expected to increase by 27% over the next 25 years, higher than growth rates during the last 15 years (17.2%). Table A.3 summarizes historical and projected future state population.

CHART A.1. REGIONAL POPULATION TRENDS 2000-2045²

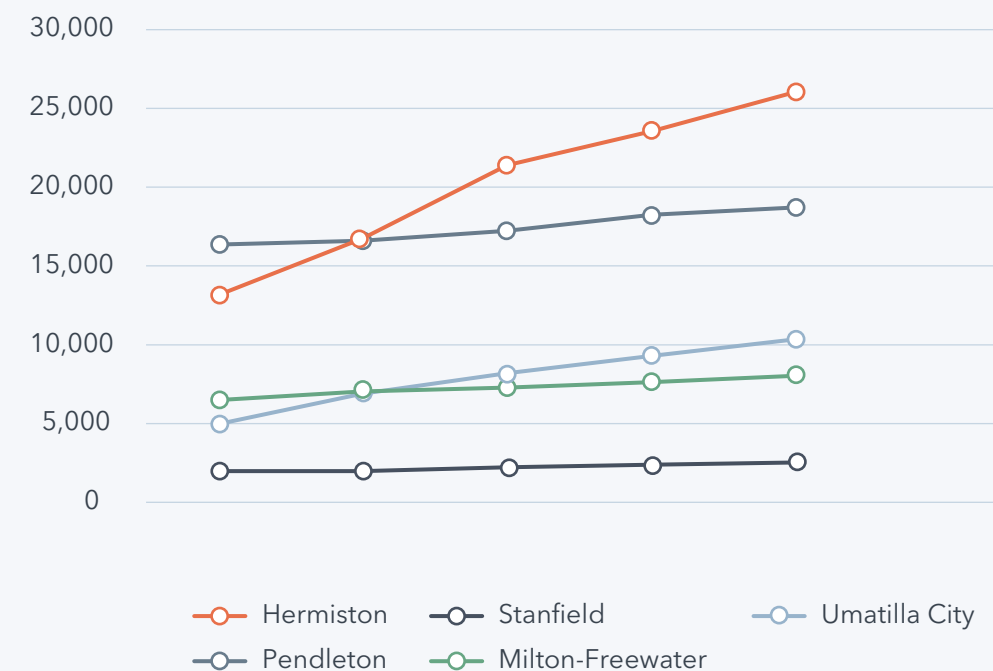


TABLE A.4. REGIONAL POPULATION TRENDS, 2000-2045²

County/City	2000 Census Population	2010 Census Population	2018 Population Estimate	2020 Population Forecast	2030 Population Forecast	2040 Population Forecast	2045 Population Forecast
Umatilla County	70,680	76,000	78,383	83,359	93,673	103,809	108,860
Hermiston	13,154	16,745	21,185	21,395	23,540	26,045	27,257
Stanfield	1,979	1,979	2,199	2,224	2,384	2,526	2,582
Umatilla City	4,978	6,906	8,104	8,205	9,300	10,340	10,824
Pendleton	16,354	16,612	17,209	17,230	18,254	18,718	18,879
Milton-Freewater	6,486	7,050	7,278	7,285	7,633	8,032	8,218

While overall growth is anticipated, it is important to note that Hermiston itself is growing at a significant rate compared to other jurisdictions in the region. As shown in Chart A.1 and Table A.4, Hermiston has the second highest population growth in Umatilla County, which suggests a need to accommodate this growth in the increased provision of parks and recreation facilities and amenities. Table A.4 and Chart A.1 summarizes historical and projected future regional population and growth rate.

Age

It is important that the PROS system meet the recreation needs of residents of all ages. Analyzing the population by age group can help adjust planning efforts for future age-related trends in recreation. Chart A.2 summarizes the age distributions of populations in Hermiston, Umatilla County, and Oregon.

In 2017, the largest percentage of Hermiston residents (28%) was between the ages of 25 and 44. An additional 24% were between the ages of 5 to 19, 12% were between the ages of 55 to 64, and 11% were age 65 or over. This shows a

large, diversified population where a variety of parks and recreation opportunities are needed to serve the entire community. In Chart A.3, age trends show that since 2010 several age groups are growing, including ages 0 to 5, 25 to 44, and 55 to 64. The percentage of residents between ages 0 to 5 and 5 to 19 in Hermiston is significantly higher (24% and 11%, respectively) compared to the population of Oregon (18% and 6%, respectively). Meanwhile, Hermiston has a slightly lower percentage of residents 65 and older (11%) than Umatilla County (15%) and the state of Oregon (16%).

Family Size

Review of household type, housing tenure, and recent housing construction provides critical information for meeting park and recreation needs. This data assists with planning for the development of new parks and the identification and use of potential funding sources, such as System Development Charges (SDCs). In addition, housing trends establish a snapshot of the type of housing being added to a community, where it is being added, and the type of homes that are being constructed.

CHART A.2. AGE DISTRIBUTION OF HERMISTON, UMATILLA COUNTY, AND OREGON³

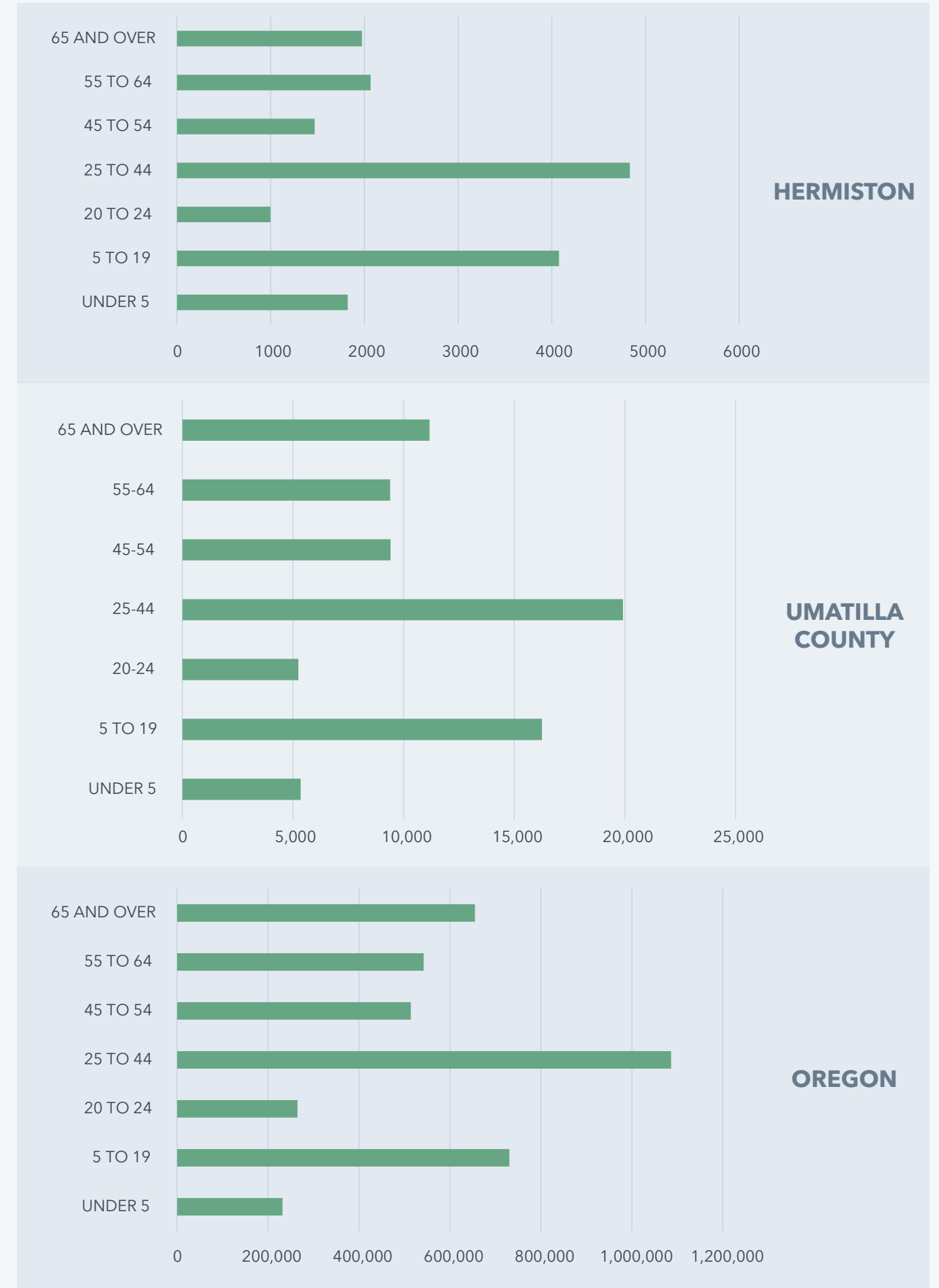
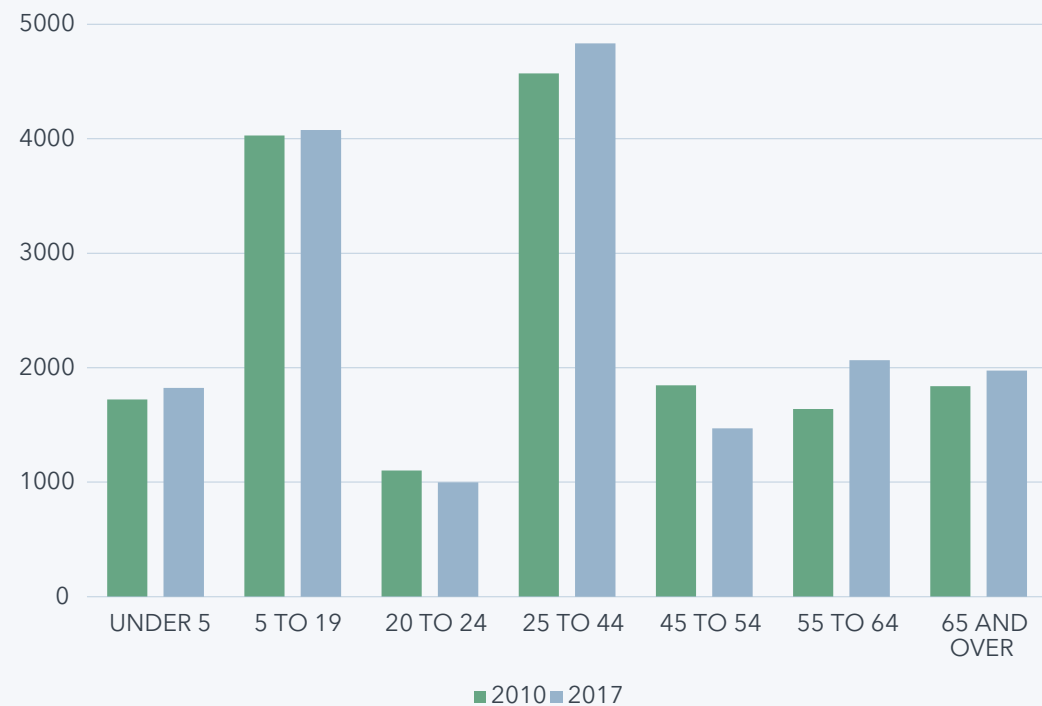


CHART A.3. HERMISTON POPULATION BY AGE ESTIMATE, 2010-2017³



In 2017, 69.1% of Hermiston households were family households (individuals related by birth, marriage, or adoption) while 30.9% were non-family households (individuals living alone or with non-relatives). Of this 30.9% of non-family households, 77% live alone. This percentage of non-family households who live alone highlights opportunities for Hermiston to meet the needs of non-family households, some of which may be older residents living alone. The high percentage of family households highlights the need to provide activities and opportunities across a wide age spectrum for families. As shown in Chart A.5, overall these percentages are consistent across the county and the state.

In 2017, Hermiston had 6,181 housing units within its city limits. Roughly 56% of residents own their homes, while about 44% are renters. As shown in Chart A.6, overall these percentages are consistent across the county and the state.

The need for improvements to the parks and recreation system (additional facilities, amenities, etc.) is also directly related to the amount of growth experienced by a community.

Understanding the nature of Hermiston’s growth is key to determining priorities for expansion of park and recreation services. Chart A.7 presents the number of major residential development permits recorded by the City of Hermiston from 2009 to 2019.

The number of residential permits in Hermiston has fluctuated from 2009 to 2019, reflecting the national housing bubble burst and the Great Recession. After an abrupt drop in 2008, residential permits continued to decline overall until 2012. Hermiston then saw a gradual rise in residential permits. In 2018, Hermiston had the highest number of residential development permits recorded in the ten-year span, with 70 permits recorded. This trend indicates an increase in residential development in Hermiston, which suggests an increase in population or families and heightened need for additional parks and recreation services in the coming years.

Race

Hermiston’s racial composition is shifting. As shown in Table A.5, in 2010 35% of the population identified as Hispanic or Latino. The Hispanic and Latino population experienced a two percent increase in the

CHART A.4. MAKEUP OF HOUSEHOLDS, 2017³

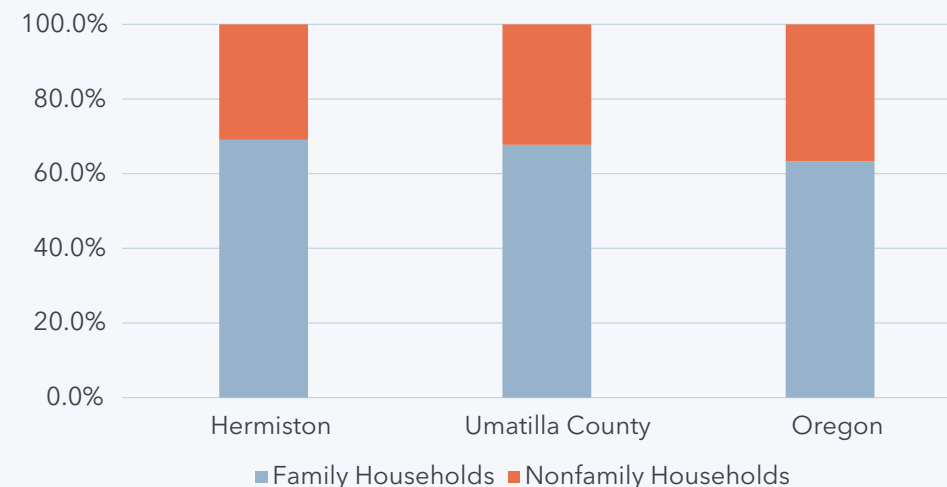


CHART A.5. OCCUPANCY STATUS, 2017³

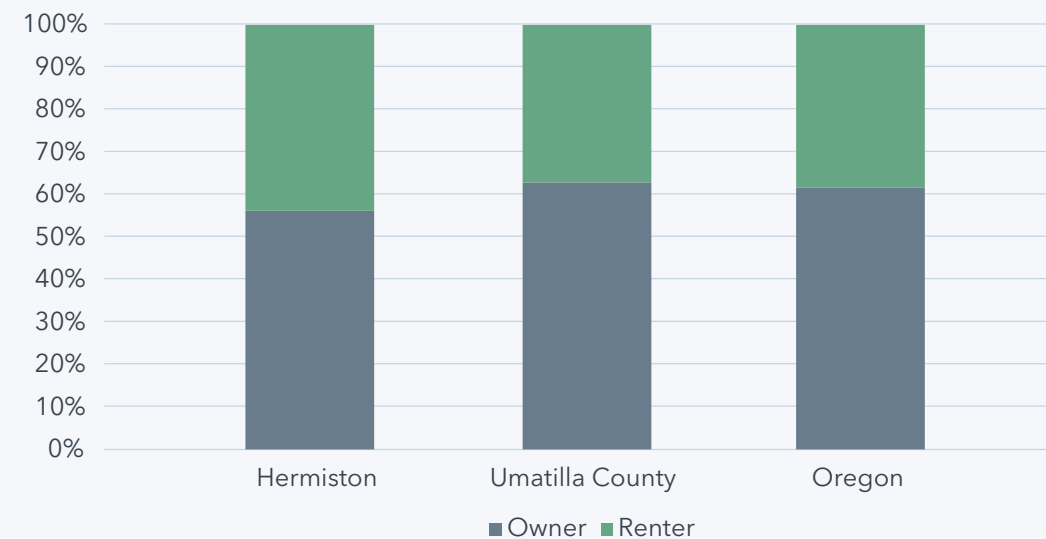


CHART A.6. RESIDENTIAL DEVELOPMENT PERMITS HERMISTON; 2009-2019⁴

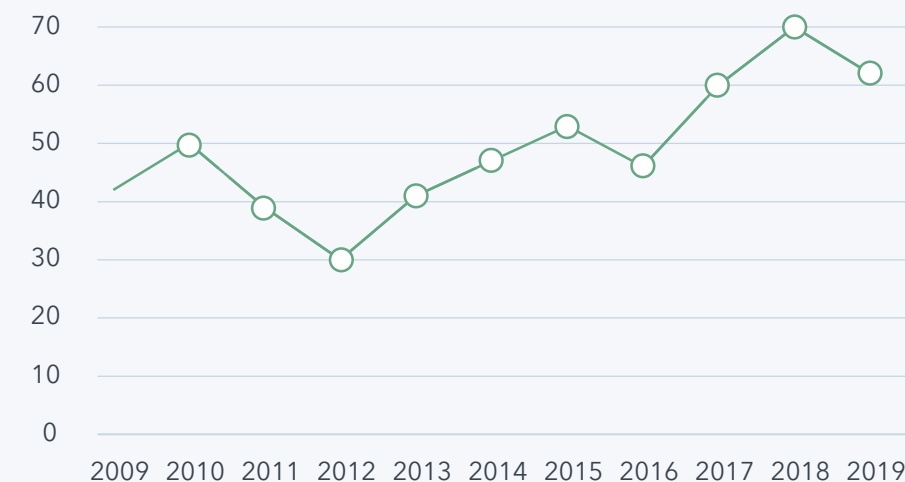


TABLE A.5. RACIAL COMPOSITION OF HERMISTON, 2010-2017³

Year	White	Hispanic or Latinx	Black or African American	American Indian or Alaska Native	Asian American	Native Hawaiian or Pacific Islander	Two or More	Total Population
2010	65%	35%	0.8%	1.3%	1.5%	0.2%	1.5%	105%
2017	61%	37%	0.2%	1.9%	0.5%	0.0%	1.2%	101%

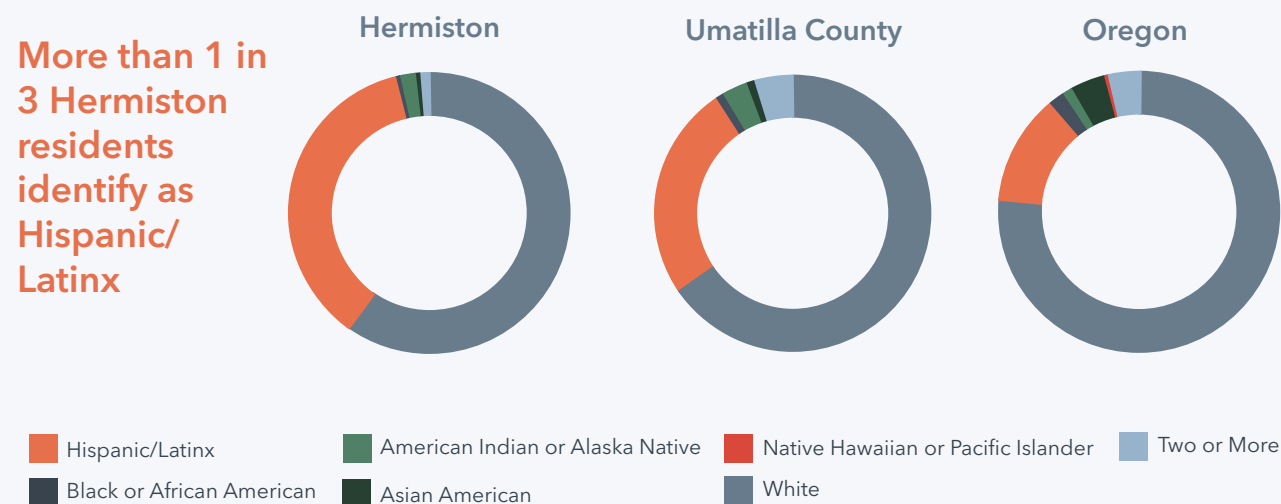
last seven years and is expected to continue to increase. In 2017, African Americans, American Indians or Alaska Natives, Asian, made up 0.2%, 1.9%, and 0.5% of the population, respectively. In addition, 1.2% of the population identified as Two or More races, and 0% of the population identified as Native Hawaiian or Pacific Islander. It is likely that Hermiston, and the rest of the country, will increasingly diversify over the next 20 years following national, statewide, and regional population trends. As shown in Chart A.8, Hermiston’s Hispanic and Latino population represents 37% of the total population, compared to 26% in the county, and 13% in the state. Hermiston will need to adapt its park and recreation facilities to meet the needs of residents from diverse backgrounds. This

diversification has implications for staffing, maintenance, and marketing of park and recreation facilities and programs. The City will need to better understand the unique ways in which different groups use services in order to meet their needs.

ECONOMIC ANALYSIS

Trends in income and education are also vital in understanding a community’s composition. Hermiston’s income and educational trends are influenced by its employment sectors, and proximity to educational opportunities.

CHART A.7. RACIAL COMPOSITION BY CITY, COUNTY, STATE, 2017³



Income

A community’s support of, desire for, and willingness to pay for park and recreation services are directly related to the strength of its economic base. Understanding Hermiston’s economic characteristics is a critical step in determining priorities for park and recreation services. This understanding also helps the City in identifying and applying for alternate funding sources to help pay for park projects. Table A.6 presents income and poverty information for Hermiston, Umatilla County, and Oregon in 2017.

In 2017, Hermiston’s median family income (\$58,852) and per capita income (\$21,010) were lower than both Umatilla County and Oregon. Hermiston and Umatilla County also had a significantly higher percentage of families living below the poverty level (15%) than in Oregon as a whole (9.8%). However, the percentage of individuals living below the poverty level in Hermiston (32.8%) and Umatilla County (31.1%) is only slightly higher than the state (28.1%). Poverty and income are important considerations in the parks planning process, as they influence residents’ willingness and ability to pay for higher levels of service and new park facilities.

Education Analysis

A community’s economic base is also influenced by the educational attainment of its residents. Understanding Hermiston’s educational background helps further understand economic factors. Table A.7 presents educational attainment for Hermiston, Umatilla County, and Oregon in 2017.

In 2017, 74.5% of Hermiston adult residents had a high school diploma, and 14.5% had a bachelor’s degree or higher, both values are lower than Oregon. However, in Umatilla County, 82% of adults had a high school diploma and 15.9% had a bachelor’s degree or higher. Educational attainment and subsequent earning potential is an important consideration in the parks planning process, as they influence residents’ ability to pay for higher levels of service and new park facilities.

COMMUNITY HEALTH ANALYSIS

In 2018, Umatilla County completed a Community Health Assessment. The assessment reflects the current state of community health in the county, including data on the rates of obesity, diabetes, high blood pressure, and mental health issues.

TABLE A.6. INCOME AND POVERTY; HERMISTON, UMATILLA COUNTY AND OREGON, 2010-2017³

	Hermiston	Umatilla County	Oregon
Median Household Income	\$50,694	\$50,071	\$56,119
Median Family Income	\$58,852	\$59,295	\$69,031
Per Capita Income	\$21,010	\$22,153	\$30,410
Percent of Families below Poverty Level	15.0%	13.5%	9.8%
Percent of Individuals below Poverty Level	32.8%	31.10%	28.1%

TABLE A.7. EDUCATIONAL ATTAINMENT; HERMISTON, UMATILLA COUNTY, AND OREGON, 2017³

	Hermiston	Umatilla County	Oregon
High School Diploma	74.5%	82.0%	90.2%
Bachelor's Degree or Higher	14.5%	15.9%	32.3%

Physical surroundings are one of the greatest environmental factors influencing community health. Parks and recreation opportunities support physical activity which has an important role in decreasing chronic illnesses such as heart disease, stroke, depression, diabetes and some cancers. The actions of park and recreation providers can influence the physical activity of the people and overall community health.

In 2014, 19% of Umatilla County adults had no physical activity outside of work, compared to 17.2% of adult Oregonians and 23% of adults in the United States who did not participate in physical activity outside of work. In 2016, 59% of the population in Umatilla County had adequate access to locations for physical activity compared to 77% in Oregon and 83% in the United States.

The assessment found 42% of adults in Umatilla County were obese which is notably higher than the rate of adults across Oregon (29%) and the United States (32%). The rates of obesity among Hispanics and Latino adults was 37%. In addition, 70% of Umatilla County adults were either overweight or obese, and 71% of Hispanic/Latino adults were overweight or obese.⁵

In 2017, 25% of children were obese in Umatilla County in 2018 compared to 14% of children in Oregon. However, 58% of Hispanic/Latino children were obese. There is a sizable health disparity between the rate of Hispanic/Latino children with

obesity compared to children in the overall population of Umatilla County.

In 2018, the rates of anxiety among children were 11% in Umatilla County compared to 6% in Oregon. The rate of children with ADD/ADHD was 7% in Umatilla County compared to 7% in Oregon. However, 15% of Hispanic/Latino children had ADD/ADHD.

Hispanic and Latino adults were also more likely to be diagnosed with diabetes: 15% of Hispanic and Latino adults were diagnosed with diabetes compared to 9% of the entire adult population. Rates of diabetes in Oregon adults were 10%.

The rate of high blood pressure in Umatilla County was lower (26%) than in Oregon (30%). Overall, Hispanic and Latino adults were less likely to have high blood pressure (22%).⁵

Understanding community health trends and health disparities is valuable when planning for current and future parks as well as recreation programming. Research suggests that health disparities can be alleviated with access to parks and nature and that physical activity and time spent in nature can reduce the risk of certain illnesses and help manage health disorders.⁵

TABLE A.8. COMMUNITY HEALTH; UMATILLA COUNTY, AND OREGON, 2018⁵

	Umatilla County	Oregon
Obesity		
Children	25%	14%
Hispanic/Latino Children Only	58%	-
Adults	42%	29%
Hispanic/Latino Adults Only	37%	-
Diabetes		
Adults	9%	10%
Hispanic/Latino Adults Only	15%	-
High Blood Pressure		
Adults	26%	30%
Hispanic/Latino Adults Only	22%	-
Anxiety		
Children	11%	6%
Hispanic/Latino Children Only	9%	-
Adults	22%	-
Hispanic/Latino Adults Only	14%	-
ADD/ADHD		
Children	7%	7%
Hispanic/Latino Children Only	15%	-

Endnotes

- 1 Source: U.S. Census Bureau: American Community Survey, 2005.
- 2 Source: Portland State University (PSU), Population Research Center, 2016
- 3 Source: U.S. Census Bureau: American Community Survey, 2017
- 4 Source: City of Hermiston Building Department, 2020
- 5 Source: Umatilla County, Community Health Assessment, 2018

PAGE INTENTIONALLY LEFT BLANK



Recreation Trends

- ▶ *HERMISTON SPORTS AND ACTIVITIES*
- ▶ *NATIONAL RECREATION PARTICIPATION*
- ▶ *STATE AND REGIONAL PARTICIPATION*

Introduction

Comparing existing sports and active recreation opportunities in Hermiston to current trends in park and recreation activities is important in order to provide services that meet current and future user demands. This task involves an inventory of current parks and recreation sports and activities, an analysis of recreation participation, and historical, current, and future demands for facilities and services.

Data on current sports and activities is taken from the [Hermiston Parks and Recreation Activity Guide \(2019, 2020\)](#). State, regional and national park and recreation user trends is obtained from two sources: The [Outdoor Recreation Trends and Futures: A Technical Document Supporting the Forest Service 2010 RPA Assessment](#), and the [2019-2023 Oregon Statewide Comprehensive Outdoor Recreation Plan \(SCORP\)](#).

HERMISTON SPORTS AND ACTIVITIES

The parks and recreation department currently provides youth sports and activities, adult sports and activities, and senior activities.

Youth Sports include basketball, gymnastics, soccer, youth bowling, flag football, volleyball, swim team, golf, and a triathlon event. Available youth activities include swimming and water play, toddler active play, dance, community theater, fishing derby, escape room, violin, photography, art, and wilderness survival.

Adult sports include basketball, volleyball, flag football, softball. Adult activities include swimming, archery, aquatic center, dance, dog and puppy training, kayaking/rafting, violin, painting, woodworking, escape room, and choir.

The Harkenrider Senior Center provides senior activities and events on a daily and weekly basis including weekday meals, morning coffee and conversation, tai chi, resistance training, pinochle, cooking, arts & crafts, gardening, quilting, and games.

In addition to the parks and recreation department, sports and activities offered by other providers in the community include dance, music, Girl Scouts and Boy Scouts of America, lacrosse, hunter safety, wellness activities, bowling, golf, youth track, special Olympics, wrestling, tae kwon do, martial arts, and boxing.

20+ Youth Sports and Activities

16+ Adult Sports and Activities

10+ Senior Activities



NATIONAL ACTIVITIES ON THE RISE

- Walking for pleasure
- Family gatherings outdoors
- Gardening or landscaping
- Viewing/photographing natural scenery,
- Visiting outdoor nature centers,
- Attending outdoor sports events



NATIONAL RECREATION PARTICIPATION

The [Outdoor Recreation Trends and Futures](#) assessment presents a national study of outdoor recreation trends as part of the 2010 Renewable Resources Planning Act Assessment by the Forest Service, U.S. Department of Agriculture. The assessment reviews past national trends in outdoor recreation participation, describes current outdoor recreation participation patterns, and compares patterns across regional and demographic levels. Nature-based recreation stands out as one national category of activity that showed substantial growth in the first decade of the millennium. Generally, all outdoor recreation activities are projected to grow in number of participants through 2060.

Additional notable trends include the rise of individual activities: in the first decade of the millennium, the most popular activities in terms of number of participants were walking for pleasure, family gatherings outdoors, gardening or landscaping, viewing/photographing natural scenery, visiting outdoor nature centers, and attending outdoor sports events. Activities on the decline include downhill skiing, inline skating, snowmobiling, ice skating, cross-country skiing, snowshoeing, and windsurfing.

The assessment also notes that while Hispanic/Latino populations have many of the same recreation needs as other groups, there are several key differences that should be considered. Of those surveyed, many Latino workers report having only one day off from work a week and are primarily day-use visitors to parks and campgrounds. In addition, outdoor activities are closely tied to inter-generational family bonding time in larger groups for longer periods of time, which suggests the need for amenities that accommodate more people for most of the day, such as larger picnic tables, group day-use areas, on-site cooking amenities, and adjacent play areas. Removing cultural and language barriers will also support greater parks and recreation accessibility for Hispanics/Latinos. Efforts to increase accessibility can include providing signage, park information, and promotional materials in Spanish.

STATE AND REGIONAL PARTICIPATION

The 2019-2023 Oregon Statewide Comprehensive Outdoor Recreation Plan (SCORP) is the State’s five-year plan for outdoor recreation. As a planning and information tool, the SCORP provides recommendations to the Oregon State Park System and guidance for the Oregon Park and Recreation Department’s (OPRD) administered grant programs. The plan also provides guidance to local governments and the private sector to make policy and planning decisions. The SCORP identifies the following key issues, which should inform parks planning and policy decisions:

A Rapidly Aging Population:

By 2030, more than 27% of Oregonians over the age of 60. Participation in recreation activities usually tends to decrease in older age groups, however the aging Boomer generation is unique as their recreation habits tend to remain steady even as they age. Oregon’s park and recreation providers will need additional data to understand the net effect of aging Boomers on parks, but they can encourage the health of older adults by providing robust recreation opportunities.

Lack of Youth Engagement in Outdoor Recreation:

Although Oregon has abundant outdoor opportunities, there is growing evidence that Oregon’s youth are participating less in outdoor recreation. Analysis of past SCORP survey results indicate that participation in traditional outdoor activities like picnicking, fishing, motor boating, and hunting has dramatically decreased. Research has shown people who do not participate in outdoor recreation in their youth are less likely to participate as adults. There are also serious long-term health implications resulting

BY THE YEAR 2030...
HISPANICS AND ASIANS
 WILL REPRESENT
OVER 32%
 OF THE STATE’S POPULATION

from a disconnect from nature.

An Increasingly Diverse Population:

By the year 2030, Oregon’s two fastest growing minority groups, Hispanics and Asians, will represent over 32% of the state’s population. Minorities are less likely than whites to participate in outdoor recreation in the U.S. As a result, these under-represented populations forego the health and social benefits of outdoor recreation, while park service providers often overlook ways to welcome these populations into their facilities. As Oregon’s population changes, it is critical to understand the constraints that limit different ethnic and racial groups from participating in outdoor recreation activities, and how to overcome these barriers.

Low Income and Outdoor Recreation:

Despite the median household income in Oregon being closely aligned with the median income in the U.S., there are significant segments of the population living in poverty. In 2016, 15.7% of Oregonians are living with household incomes below the poverty threshold. This has jumped from 11.6% in 2000.

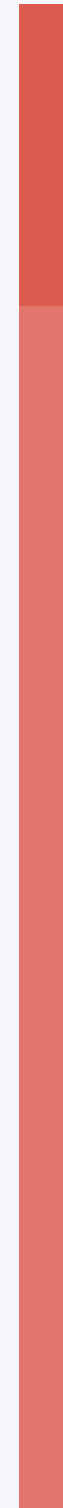
More than 1 in 5 people living in poverty are children. Minorities are also more affected by poverty than whites. Poverty rates are between 26.1%-32.5% for African Americans, Native Hawaiian or Pacific Islanders, Hispanics or Latino, and American Indian and Alaska Native while only 13% of whites experience poverty. Individuals with lower incomes are less likely to participate in outdoor recreation activities and exercise, mainly for cost barriers and safety concerns. Top priorities to serve low-income populations are to provide free activities and well-maintained parks to promote inclusion and safety.

In addition, the SCORP includes a county-based recreational needs assessment. This assessment uses two distinct methods to identify recreational needs at the state and county levels. The first method involves a survey of Oregon public recreation providers. The second method is a component of the statewide survey of Oregon residents (Oregon Resident Outdoor Recreation Demand Analysis) conducted by Oregon State University. Residents were asked to rate a list of 17 priorities using a five-point Likert scale. State and county-level priorities compiled from this assessment are included in Table B.1. through B.3. below.

Children’s playgrounds, restrooms and playgrounds with natural materials are a priority for Umatilla County park providers. Hermiston Parks and Recreation is in the process of re-building Funland, a themed children’s playground in Butte Park.

26.1%-32.5%

African Americans, Native Hawaiian or Pacific Islanders, Hispanics or Latinos, American Indian and Alaska Native



13%

Whites

POVERTY DISPARITY IN OREGON

TABLE B.1. UMATILLA COUNTY NEED; SCORP NEEDS ASSESSMENT¹

	Umatilla County Need Public Recreation Provider		Statewide Need Oregon Resident		Statewide Rural Need Oregon Resident	
Close- To-Home Priorities	Children's playgrounds and play areas built with swing sets, slides and climbing apparatuses	4.0	Dirt/other soft surface walking trails and paths	3.71	More restrooms	3.63
	Restrooms	3.8	More restrooms	3.62	Public access sites to waterways	3.57
	Children's playgrounds and play areas made of natural materials (logs, water, sand, boulders, hills, trees)	3.6	Children's playgrounds and play areas made of natural materials (logs, water, sand, boulders, hills, trees)	3.54	Dirt/other soft surface walking trails and paths	3.55
	-		Nature and wildlife viewing areas	3.52	Picnic areas & shelters for small visitor groups	3.50
	-		Public access sites to waterways	3.52	Children's playgrounds and play areas made of natural materials (logs, water, sand, boulders, hills, trees)	3.48
Dispersed- Area Priorities	Restrooms	4.5	Dirt/other soft surface walking trails and paths	3.68	Public access sites to waterways	3.63
	RV/trailer campgrounds	4.5	Nature and wildlife viewing areas	3.65	More restrooms	3.59
	Cabins and yurts for visitors	4.5	More restrooms	3.59	Dirt/other soft surface walking trails and paths	3.55
	-		Public access sites to waterways	3.57	Nature and wildlife viewing areas	3.51
	-		More places and benches to observe nature and others	3.36	Picnic areas and shelters for small visitor groups	3.37

Oregon's statewide population and statewide rural population both included soft surface walking trails and paths, more restrooms, children's playgrounds, and public access to waterways in their top five priorities. The statewide population also identifies nature and wildlife viewing areas as a priority while statewide rural populations identified picnic areas and shelters for small groups as a priority.

The Hispanic/Latino statewide rural population's priorities mostly overlap with the statewide rural population except they identified more shaded areas and more places and benches to observe nature and others in their top five priorities. They also included picnic areas and shelters for large groups as a priority, which was unique when compared to the other rural population group priorities.

TABLE B.2. UMATILLA COUNTY NEED; SCORP NEEDS ASSESSMENT¹

	Statewide Rural Need Latino Resident		Statewide Need Low Income Resident	
Close- To-Home Priorities	More restrooms	4.07	More restrooms	3.92
	More shaded areas	3.88	Picnic areas and shelters for small visitor groups	3.78
	Children's playgrounds and play areas made of natural materials (logs, water, sand, boulders, hills, trees)	3.84	Nature and wildlife viewing areas	3.63
	More places and benches to observe nature and others	3.84	Public access sites to waterways	3.63
	Picnic areas and shelters for small visitor groups	3.79	Dirt/other soft surface walking trails and paths	3.32
Dispersed- Area Priorities	More restrooms	3.93	More restrooms	3.80
	More shaded areas	3.81	Public access sites to waterways	3.73
	More places and benches to observe nature and others	3.74	Nature and wildlife viewing areas	3.71
	Picnic areas and shelters for small visitor groups	3.58	Dirt/other soft surface walking trails and paths	3.71
	Picnic areas and shelters for large visitor groups	3.56	More places and benches to observe nature and others	3.59

TABLE B.3. UMATILLA COUNTY NEED; SCORP NEEDS ASSESSMENT¹

Statewide Rural Need Young Old Resident		Statewide Rural Need Middle Old Resident		
Close- To-Home Priorities	More restrooms	3.65	More restrooms	3.49
	Public access sites to waterways	3.65	More places and benches to observe nature and others	3.37
	Dirt/other soft surface walking trails and paths	3.60	Security cameras in key places	3.37
	Picnic areas and shelters for small visitor groups	3.46	Picnic areas and shelters for small visitor groups	3.31
	Nature and wildlife viewing areas	3.42	Nature and wildlife viewing areas	3.29
Dispersed- Area Priorities	Public access sites to waterways	3.82	More restrooms	3.60
	Dirt/other soft surface walking trails and paths	3.71	More places and benches to observe nature and others	3.41
	Nature and wildlife viewing areas	3.68	Security cameras in key places	3.36
	More restrooms	3.64	Nature and wildlife viewing areas	3.33
	Picnic areas and shelters for small visitor groups	3.38	Picnic areas and shelters for small visitor groups	3.22

The low income statewide rural population priorities also overlap with the statewide rural population for the most part, except that they prioritized nature and wildlife viewing areas in their top five priorities.

Young old (ages 60-74 years old) and middle old (ages 75-84 years old) statewide rural populations overlap with the statewide rural population in terms of their top priorities. The young old population overlapped the most with only one unique priority: nature and wildlife viewing areas. The middle old population only had two overlapping priorities with the statewide rural population (more restrooms and picnic areas and shelters for small visitor groups).

They diverged when they identified nature and wildlife viewing areas (which was also a priority for the young old population), and security cameras, and more places and benches to observe nature and others.

Restrooms, picnic areas, water access, trails, and opportunities to observe nature and wildlife are common priorities among all population groups. Unique priorities include benches for young old and middle old residents, and more shade and picnic areas for large groups for Hispanic/Latino residents.

Endnotes

1 Source: 2019-2023 Oregon Statewide Comprehensive Outdoor Recreation Plan



C

City Inventory

- ▶ OVERVIEW
- ▶ CLASSIFICATION
- ▶ INVENTORY

City of Hermiston Parks, Recreation and Open Space (PROS) Plan Update

To: Larry Fetter, Parks and Recreation Director
City of Hermiston

From: Colin McArthur, AICP
Liz Auvil
Kelsey Zlevor

Date: November 18, 2019

Subject: City Facility Assessment

1.0 OVERVIEW

Parks, recreation, and open space system planning requires identification and assessment of existing park and recreation facilities and amenities through an inventory process. The inventory process highlights system-wide strengths, needs, opportunities and constraints, and reveals underserved areas and services. Knowledge of the activities that occur in each park and the condition of facilities and amenities helps guide recommendations and capital improvement programming efforts. The inventory process includes consideration and assignment of park classifications. Careful review of current and future park system needs by park classification type ensures a balanced parks system capable of efficient service to the community.

2.0 CLASSIFICATION

Prior versions of the City's PROS plan use National Recreation and Parks Association (NRPA) classifications as a basis for the establishment of a classification system specific to the needs, resources, and facilities in Hermiston.¹ Park classification determination considers individual park benefits, functions, size, service area, and amenities.

¹ National Recreation and Parks Association Parks Classification and Parks Definitions. National Recreation and Parks Association and the American Academy for Park and Recreation Administration, Mertes, James D. and Hall, James R. Park, Recreation, and Open Space and Greenway Guidelines. 1996.

The 2020 PROS Plan applies the following park classifications selected for the City of Hermiston.

- **Parks**
 - Mini-Parks
 - Neighborhood Parks
 - Community Parks
 - Special Use Parks
- **Natural Areas**
 - Linear Parks
 - Open Space
- **Trails**
- **Undeveloped Parkland**

2.1 Mini Parks

Description: Mini parks provide immediate residents with access to basic recreation opportunities. They are designed for passive and unstructured activities.

Size (Acreage): 1 acre or less

Location (Proximity): Within ¼ mile access to neighborhoods or adjacent to commercial areas

Characteristics:

- Relatively level and usable
- Space for both active and passive uses
- Access via local streets with sidewalks

Typical Features and Amenities:

- Children's playground
- Pathways
- Picnic tables
- Picnic shelter
- Interpretive signage
- Landscape/plantings

2.2 Neighborhood Parks

Description: Neighborhood parks provide nearby residents with access to basic recreation opportunities. They are designed for passive and unstructured activities and enhance neighborhood identity

Size (Acreage): 3 to 5 acres

Location (Proximity): Within ½ mile access to neighborhoods to serve a population of up to 5,000.

Characteristics:

- Relatively level and usable
- Space for both active and passive uses
- Access via local streets with sidewalks
- Basic recreation opportunities
- Enhance neighborhood identity

Typical Features and Amenities:

- Children's playground
- Sport courts
- Multi-use fields
- Open areas for unstructured play
- Natural areas
- Restrooms
- Pathways
- Picnic tables
- Picnic shelters
- Interpretive signage
- Landscape/plantings

2.3 Community Parks

Description: Community parks provide residents with active and passive recreation opportunities. They are designed to enhance neighborhood and community identity, preserve open space, and enhance the quality of life of community residents. These parks often accommodate large group activities and include major recreation facilities, such as sports fields.

Size (Acreage): 25+ acres

Location (Proximity): Within 1-2 miles of several neighborhoods

Characteristics:

- Space for both active and passive uses
- Major recreation facilities
- Sports fields
- Accommodate group activities
- Preserve open space
- Enhance quality of life and community identity

Typical Features and Amenities:

- Children's playgrounds (toddler and youth)
- Designated sports fields
- Designated sports courts
- Skateparks
- Off-leash dog areas
- Indoor recreation center
- Swimming pool
- Performance space
- Community gardens
- Areas for unstructured play
- Picnic shelters
- Picnic tables
- Concession or vendor space
- Natural areas
- Open space
- Interpretive signage
- Public art
- Storage and maintenance buildings
- Restrooms

2.4 Special Use Parks

Description: Special use parks are unique sites typically occupied by a specialized facility.

Size (Acreage): Variable

Location (Proximity): No applicable standard

Characteristics:

- Specialized facility including one or more uses and activities

Typical Features and Amenities:

- Dependent on actives and site use

2.5 Linear Parks

Description: Linear Parks are developed or landscaped areas and other lands that follow linear corridors such as railroad rights-of-way, rivers, streams, canals, power lines, utilities, and other elongated features.

Size (Acreage): Variable

Location (Proximity): No applicable standard

Characteristics:

- Passive uses
- Landscape/plantings
- Open space
- Located on elongated features

Typical Features and Amenities:

- Trailhead
- Trails and pathways
- Viewpoints
- Seating areas
- Picnic tables
- Turf areas
- Landscape/plantings
- Interpretive signage
- Natural areas
- Open space

2.6 Open Space

Description: Open space includes natural resources that are managed for conservation environmental education, and passive recreational use.

Size (Acreage): Variable

Location (Proximity): No applicable standard

Characteristics:

- Passive uses
- Managed natural resources

Typical Features and Amenities:

- Natural areas
- Open space
- Trailhead trails and pathways
- Viewpoints
- Picnic shelter
- Picnic areas
- Interpretive or educational facilities

2.7 Trails

Description: Trails include separate/single-purpose paved trails for pedestrians or bicyclists (Type I), multipurpose paved trails for pedestrians and bicyclists (Type II), and nature trails for pedestrians that are hard- or soft-surfaced (Type III).

Size (Acreage): Variable

Location (Proximity): No applicable standard

Characteristics:

- Separated/single purpose paved surface
- Multipurpose paved surface
- Hard- or soft-surfaced nature trails

Typical Features and Amenities:

- Trailhead
- Viewpoints
- Interpretive and educational opportunities

2.8 Undeveloped Parkland

Description: Undeveloped parkland includes land owned by the City that has the potential to be developed as a park, open space, or trails. Development can occur through adding facilities or amenities or improving the land for higher use.

Table 2.1. Park Classification Categories includes a summary type, size (acreage), service area (proximity), and typical facilities found in each category.

Table 2.1. Park Classification Categories

CLASSIFICATION	ACREAGE	PROXIMITY	TYPICAL FACILITIES
PARKS			
Mini Parks	1 acre or less	¼ mile radius	Children’s playground, picnic tables, shelter, pathways, interpretive signage, and landscape/plantings

City of Hermiston
PROS Plan Update
City Facility Assessment

November 18, 2019

Neighborhood Parks	3 to 5 acres	½ mile radius to serve a population of up to 5,000; a neighborhood	Children’s playground, sport courts, multi-use fields, areas for unstructured play, picnic tables, picnic shelters, pathways, landscape/plantings, natural areas, open space, interpretive signage, and restrooms.
Community Parks	25+ acres	1 - 2 mile radius; several neighborhoods	Children’s playgrounds (toddler and youth), designated sports fields, designated sports courts, skateparks, off-leash dog areas, indoor recreation center, swimming pool, performance space, community gardens, areas for unstructured play, picnic shelters, picnic tables, concession or vendor space, natural areas, open space, interpretive signage, public art, storage and maintenance buildings, and restrooms
Special Use Parks	Variable	No applicable standard	Dependent on activities and site use.
NATURAL AREAS			
Linear Parks	Variable	No applicable standard	Trailhead, trails and pathways, viewpoints, seating areas, picnic tables, turf areas, landscape/plantings, interpretive signage, natural areas, and open space.
Open Space	Variable	No applicable standard	Natural areas, open space, trailhead trails and pathways, viewpoints, picnic shelter, picnic areas, interpretive or educational facilities.
TRAILS			
Trails	Variable	No applicable standard	Type I: Separate/single-purpose paved trails for pedestrians or bicyclists. Type II: Multipurpose paved trails for pedestrians and bicyclists. Type III: Nature trails for pedestrians; hard- or soft-surfaced.

City of Hermiston
PROS Plan Update
City Facility Assessment

November 18, 2019

3.0 INVENTORY

The City of Hermiston owns and operates **fifteen** parks, recreation, and open space facilities that comprise the system. The parks inventory includes all parkland owned by the City of Hermiston. The inventory was completed using information provided by City staff and site visits to park and recreation facilities.

3.1 Mini Parks

The PROS system includes **one** mini park.

Greenwood Park

Greenwood Park (0.11 acres) is located at 80 W Beech Avenue, at the intersection of W Beech Avenue and NW Spruce St. The park is bordered on three sides by residential properties and has street frontage on the other two sides. The park includes a children’s playground, basketball court, restroom, and perimeter fencing. Pedestrian access is provided by sidewalks along Beech Street. The Park was recently renamed after Greenwood Luster, a local pastor who advocated park development. The park was renovated in 2019.

3.2 Neighborhood Parks

The PROS system includes **eight** neighborhood parks.

Belt Park

Belt Park (3.15 acres) is located at SW 7th Street between W Quince Avenue and W Pine Avenue, across from West Park Elementary School. The park is flag shaped and extends along the entirety of the W Pine Avenue half-block frontage, between SW 9th Street and SW 7th Street. The eastern portion of the park occupies the full block width along SW 7th Street. The east end of the park includes a picnic shelter, pathways, garden areas, landscape/plantings, and a bridge crossing over an irrigation canal conveying water from the Umatilla River. The irrigation canal is piped underground through the remainder of Belt Park and emerges west of SW 9th Street. The west portion of the park includes open lawn areas and tree plantings.

Harrison Park

Harrison Park (2.50 acres) is located at NW 13th Street, west of W Madrona Avenue and northeast of Riverfront Park. The park includes restrooms, off-street parking, a children’s playground, and open lawn areas used primarily for soccer. The north edge of the site includes the Oxbow Trail trailhead, a 3-mile paved trail that extends southwest from Harrison Park and connects to Riverfront Park.

Highland Park

Highland Park (3.00 acres) is Located at 134 NE 13th Street. The park is triangular shaped as is bordered by E. Main Street, NE 13th Street, and NE Madrona Drive, all of which are fully improved streets with sidewalks, planter strips, and curbs. The park includes a children’s playground in the NW corner surrounded by a circular concrete pathway with picnic tables and benches. The remaining site is unstructured open lawn area with scattered tree plantings on the perimeter.

Hodge Park

Hodge Park (1.80 acres) is located at 100 W Highland Avenue, west of the railroad corridor and adjacent to the Hermiston Oregon Maxwell Siding Railroad Museum. The park includes a children's playground, restrooms, sand volleyball court, pathways, off-street parking, and an interpretive display associated with the Railroad Museum. Pedestrian access is provided by sidewalks on W Highland Avenue.

McKenzie Park

McKenzie Park (2.25 acres) is located on W Orchard Avenue, between SW 3rd Street and SW 1st Street. The park is bordered by the Municipal Court to the east, Weber Field to the south, and the Post Office to the east. The park includes a children's playground, restrooms, picnic shelters, a gazebo, pathways, and lawn areas. The main feature is a large plaza surrounded by retaining walls, with special paving, lighting, and an art installation at the center consisting of a three-sided clock tower and bell. The park also includes a historic building currently occupied by the Arc, a public agency serving Umatilla County by providing opportunities and protecting the rights of persons with disabilities.

Newport Park

Newport Park (2.70 acres) is located is a full block bounded by SE 5th Street and SE 6th Street and E Newport Avenue and E Hurlbert Avenue. The park also includes property to the north, across E Hurlbert Avenue, which includes three full basketball courts with lighting. The main park block includes a children's playground, storage and maintenance facility, and baseball softball field with dugouts, bleachers, concessions/storage building, fencing, and lighting. All of the surrounding streets have curbside sidewalks and there is small drop off area adjacent to the baseball/softball field along SE 6th Avenue.

Sunset Park

Sunset Park (0.82 acres) is located at 1100 NE 4th Street and has frontage on NE 4th Street, which is improved with curbside sidewalks. The park is adjacent to a City Public Works operations yard to the east. The driveway access to the yard bisects the park to the south. The park abuts residential property to the north. The park includes a children's playground, open lawn areas, and tree plantings. The playground equipment was recently replaced in 2017.

Victory Square Park

Victory Square Park (5.16 acres) is located between W Hermiston Avenue and W Orchard Street, west of SW 10th Street. The park has frontage on all three streets. W Hermiston Avenue and W Orchard Street are improved with curbside sidewalks; SW 10th Street does not have sidewalks. The western portion of the block is developed as medium-density residential housing. The park includes a walking path with several loops throughout the site, children's playground, picnic shelter, sand volleyball court, basketball courts, swing sets, restrooms, and extensive tree plantings. The main feature is a military memorial in the NE corner of the park with a plaza, rock walls, and a flagpole.

3.3 Community Parks

The PROS system includes **three** community parks.

Butte Park

Butte Park (44.72 acres) is the largest park in Hermiston and is bounded by Hermiston/Highway 207 to the north, NW 7th Street to the east, residential property to the south, and NW 9th Street and the Good Shepard General Hospital campus to the east. Several sign-family residential properties are located north of W Hartley Avenue and W Hartley Avenue between the streets and the park property. The park features Hermiston Butte, a small butte with a gravel access road and a network of natural hiking trails that lead to scenic views from the top. The hosts the annual Butte Challenge, a foot race of various lengths that supports the Hermiston Cross Country Program. An irrigation canal is located on the east side of Hermiston Butte, between the toe of the butte and the main park.

The park includes four soccer fields, restrooms, a picnic shelter, sprayground, off-street parking, open lawn areas, and tree plantings. The main feature is **Funland**, an expansive and unique children's playground, which is currently being replaced and renovated following fire damage. Also included is the aquatic center

The park also includes the **Hermiston Family Aquatic Center**, which features a 50-meter pool, water slide, diving board, concessions, and locker rooms. A line of umbrellas offer shade alongside the pool. A 500 square foot picnic shelter is available for the public to rent.

Riverfront Park

Riverfront Park (16.36 acres) is located at W Highland Avenue and SW 23rd Street, along the Umatilla River at the west end of Hermiston. The park features an approximately 1-mile walking path with fitness stations that is heavily used by the community. The walking path connects to the Oxbow Trail at the northeast corner of the site. An additional path connection at the south end of the park under County 1200 Road connects the surrounding neighborhood to the park with an off-street trail south of W Highland Avenue. Riverfront Park also includes a children's playground, picnic shelter, restrooms, and off-street parking. Along the Umatilla River, the park includes a non-motorized boat launch and fishing access.

Theater Sports Park

Theater Sports Park (13.79 acres) is located at the north end of Hermiston, at 1800 NW 6th Street. The park has access from NW Geer Road and NW 6th Street and is surrounded by industrial property to the east, south, and west and an irrigation canal to the north. The park includes two softball fields with lighting, fencing, dugouts, and backstops, and unstructured turf areas used for football and soccer. The park also includes entry landscape plantings, a children's playground in the SE corner of the site, and off-street parking.

3.4 Special Use Parks

The PROS system includes **two** special use parks.

Disc Golf Course

The Hermiston Disc Golf Course (42.09 acres) is located in northwest Hermiston at the intersection of W Elm Ave and NW 11th Street. The site has frontage on W Elm Avenue to the north, NW 11th Street to the east, and W Linda Street to the south. The disc golf course, developed in 2017, is located on property owned by the city of Hermiston, the Hermiston Irrigation District and Good Shepherd Health Care System. The site is predominantly undeveloped, and the landscape includes grasses and sparse trees with some elevation change. The disc golf course provides 18 holes with concrete tees and basket holes over 7,502 linear feet. There is a gravel parking lot in the northeast corner of the site.

Community Center

The Hermiston Community Center (2.10 acres) is located along High 395, between SE 2nd Street and SE 3rd Street. The Community Center is centrally located in Hermiston, just south of downtown. The center provides offices for the Parks and Recreation department as well as meeting rooms, an auditorium and facilities for numerous programs and classes including gymnastics, dance, theater, and the arts. The center was purchased in 1994 by the city and was formerly a grocery store.

3.5 Linear Parks

The PROS system includes **one** linear park.

Highway 395 Park

Highway 395 Park (0.93 acres) is located on the west side of Highway 395. The northern end of park starts between E Main Street and E Hurlburt Avenue and extends along Highway 395 to the southern end near SE 2nd Street. The park features a winding walking path with landscape plantings, benches, and a monument to local service organizations.

3.6 Trails

The PROS system includes **two** trails.

East Hermiston Loop Trail

The East Hermiston Loop Trail is a 3.84-mile trail along Diagonal Boulevard, E Elm Avenue, E Main Street and N 1st Street. The trail is primarily on-street with an off-street section on Diagonal Blvd.

West Hermiston Loop Trail

The West Hermiston Loop Trail is a 6.78-mile trail in the northwest part of Hermiston. The trail follows an off-street and then on-street segment along Highland Avenue before running north along 1st Street, travelling through downtown, and continuing north before turning west along W Elm Avenue near Good Shepherd Hospital. The trail connects with the off-street Oxbow Trail segment at 11th Street and extends southwest towards Riverfront Park.

3.7 Undeveloped Parkland

The PROS system includes **five** undeveloped sites.

Tax lot 4N2809DA05002

Located southeast of NW 12th Street and West Madrona Avenue, the City owns one tax lot that appears to overlap with NW Harkenrider Court. The lot is 0.27 acres.

Tax lot 4N2814DA00100

Located at the end of Port Drive, the City owns one tax lot slightly north of Highway 395. The lot is 3.66 acres.

Taxlot 4N2814DA00102

Located in the same vicinity at tax lot 4N2814DA00100, the City owns a tax lot at the end of Pacific Street that is 0.33 acres.

Steelhead Park

Steelhead Park is comprised of two tax lots (4N28160000300, 4N2817A000200) and is located off of County 1200 Road/Bridge Road just west of SW 23rd Street. The long, linear site abuts the Umatilla River to the west and private property to the east. A trail connection underneath the bridge connects Steelhead Park to Riverfront Park and the west loop trail. The site has significant trees and under story vegetation, particularly along the bank of the Umatilla River. The site is 7.32 acres.

Tax lot 4N2811CC02300 (Teen Adventure Park)

The future teen adventure park site consists of one tax lot (4N2811CC02300) and is approximately .50 acres. The site is west of S Highway 395 and the railroad tracks but east of McKenzie Park and the Hermiston Police Department. To the north of the site is W Orchard Avenue. The site is currently an undeveloped gravel lot with no sidewalks, trees or vegetation.

3.8 Inventory Summary

The City owns or maintains **fifteen** park and recreation facilities, which comprise 141.48 acres of developed parks, and **two** trail facilities, which comprise 10.62 miles of trail. In addition, the City owns **five** undeveloped facilities, which comprise 12.08 acres of undeveloped parkland. Table 3.1. Inventory Summary contains a list of developed and undeveloped facilities and their associated classifications and size within the Hermiston PROS system. Table 3.2. Major Facilities and Amenities includes a summary of the quantity of those features provided by the system including designated sports fields, designated sports courts, playgrounds, water play, park structures, recreation facilities, and other facilities.

City of Hermiston
PROS Plan Update
City Facility Assessment

November 18, 2019

Table 3.1. Inventory Summary

DEVELOPED FACILITIES	
PARKS	ACRES
Mini-Parks	0.11
Greenwood Park	0.11
Neighborhood Parks	21.38
Belt Park	3.15
Harrison Park	2.50
Highland Park	3.00
Hodge Park	1.80
McKenzie Park	2.25
Newport Park	2.70
Sunset Park	0.82
Victory Square Park	5.16
Community Parks	74.87
Butte Park	44.72
Riverfront Park	16.36
Theater Sports Park	13.79
Special Use Parks	44.19
Disc Golf Course	42.09
Community Center	2.10
Linear Parks	0.93
Highway 395 Park	0.93
TOTAL PARK ACRES	141.48
TRAILS	MILES
East Hermiston Loop Trail	3.84
West Hermiston Loop Trail	6.78
TOTAL TRAIL MILES	10.62
UNDEVELOPED FACILITIES	
SITES	ACRES
Taxlot 4N2809DA05002	0.27
Taxlot 4N2814DA00100	3.66
Taxlot 4N2814DA00102	0.33
Steelhead Park	7.32
Taxlot 4N2811CC02300 (Teen Adventure Park)	0.50
TOTAL UNDEVELOPED FACILITY ACRES	12.08

City of Hermiston
PROS Plan Update
City Facility Assessment

November 18, 2019

Table 3.2. Major Facilities and Amenities

TYPE	QUANTITY
Designated Sports Fields	
Softball/Baseball Field	3
Soccer Field	4
Disc Golf Course	1
Designated Sports Courts	
Basketball Courts	5
Sand Volleyball Courts	2
Playgrounds	
Children's Playground	10
Themed Playground	1
Water Play	
Sprayground	1
Park Structures	
Restrooms	8
Picnic Shelter	5
Gazebo	1
Recreation Facilities	
Outdoor Aquatic Center	1
Community Center	1
Other Facilities	
Drinking fountain	11
Trailhead	1
Historic Building (Arc)	1

Greenwood Park

Type

- Mini Park

Size

- 0.11 acres

Status

- Developed

Existing Facilities

- Children's playground
- Basketball court
- Restrooms
- Landscape/plantings
- Perimeter fencing

Description

- Greenwood Park Greenwood Park is located at 80 W Beech Avenue, at the intersection of W Beech Avenue and NW Spruce St. The park is bordered on three sides by residential properties and has street frontage on the other two sides. The park includes a children's playground, basketball court, restroom, and perimeter fencing. Pedestrian access is provided by sidewalks along Beech Street. The Park was recently renamed after Greenwood Luster, a local pastor who advocated park development. The park was renovated in 2019.



Source: Esri, DigitalGlobe, GeoEye, Earthstar Geographics, CNES/Airbus DS, USDA, USGS, AeroGRID, IGN, and the GIS User Community

LEGEND

- ① Existing amenity
- ① Proposed amenity

INDEX



GREENWOOD PARK

Hermiston Parks, Recreation and Open Space Plan Update



Belt Park

Type

- Neighborhood Park

Size

- 3.15 acres

Status

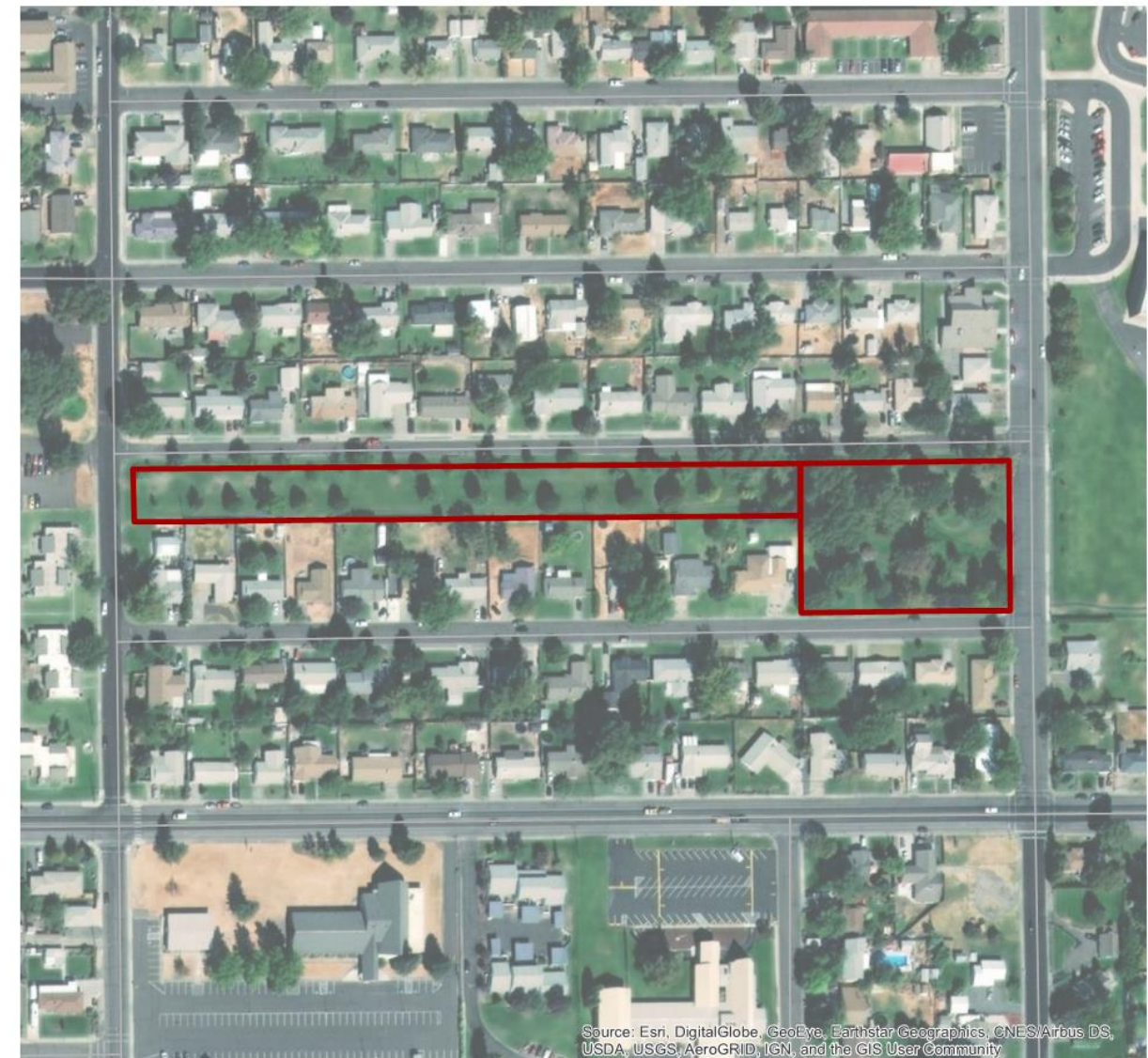
- Developed

Existing Facilities

- Picnic shelter
- Picnic tables
- Benches
- Pathways
- Garden areas
- Landscape/plantings
- Bridge crossing
- Open and piped irrigation canal
- Lawn area
- Tree plantings

Description

- Belt Park is located at SW 7th Street between W Quince Avenue and W Pine Avenue, across from West Park Elementary School. The park is flag shaped and extends along the entirety of the W Pine Avenue half-block frontage, between SW 9th Street and SW 7th Street. The eastern portion of the park occupies the full block width along SW 7th Street. The east end of the park includes a picnic shelter, pathways, garden areas, landscape/plantings, and a bridge crossing over an irrigation canal conveying water from the Umatilla River. The irrigation canal is piped underground through the remainder of Belt Park and emerges west of SW 9th Street. The west portion of the park includes open lawn areas and tree plantings.



Source: Esri, DigitalGlobe, GeoEye, Earthstar Geographics, CNES/Airbus DS, USDA, USGS, AeroGRID, IGN, and the GIS User Community

LEGEND

- ① Existing amenity
- ① Proposed amenity

INDEX



BELT PARK

Hermiston Parks, Recreation and Open Space Plan Update



Harrison Park

Type

- Neighborhood Park

Size

- 2.50 acres

Status

- Developed

Existing Facilities

- Children’s playground
- Trailhead (Oxbow Trail)
- Open lawn areas
- Restrooms
- Off-street parking

Description

- Harrison Park (2.50 acres) is located at NW 13th Street, west of W Madrona Avenue and northeast of Riverfront Park. The park includes restrooms, off-street parking, a children’s playground, and open lawn areas used primarily for soccer. The north edge of the site includes the Oxbow Trail trailhead, a 3-mile paved trail that extends southwest from Harrison Park and connects to Riverfront Park.

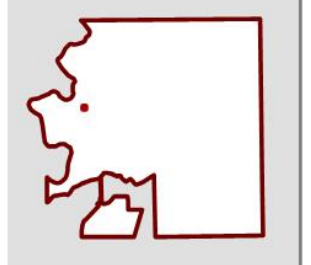


Source: Esri, DigitalGlobe, GeoEye, Earthstar Geographics, CNES/Airbus DS, USDA, USGS, AeroGRID, IGN, and the GIS User Community

LEGEND

- ① Existing amenity
- ① Proposed amenity

INDEX



HARRISON PARK

Hermiston Parks, Recreation and Open Space Plan Update



Highland Park

Type

- Neighborhood Park

Size

- 3.00 acres

Status

- Developed

Existing Facilities

- Children’s playground
- Pathways
- Picnic tables
- Benches
- Unstructured open lawn area
- Tree plantings

Description

- Highland Park is located at 134 NE 13th Street. The park is triangular shaped as is bordered by E. Main Street, NE 13th Street, and NE Madrona Drive, all of which are fully improved streets with sidewalks, planter strips, and curbs. The park includes a children’s playground in the NW corner surrounded by a circular concrete pathway with picnic tables and benches. The remaining site is unstructured open lawn area with scattered tree plantings on the perimeter.

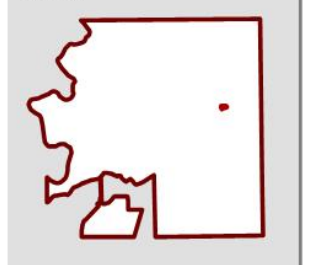


Source: Esri, DigitalGlobe, GeoEye, Earthstar Geographics, CNES/Airbus DS, USDA, USGS, AeroGRID, IGN, and the GIS User Community

LEGEND

- ① Existing amenity
- ① Proposed amenity

INDEX



HIGHLAND PARK

Hermiston Parks, Recreation and Open Space Plan Update



Hodge Park

Type

- Neighborhood Park

Size

- 1.80 acres

Status

- Developed

Existing Facilities

- Children’s playground
- Drinking fountain
- Restrooms
- Sand volleyball court
- Pathways
- Off-street parking
- Interpretive display

Description

- Hodge Park (1.80 acres) is located at 100 W Highland Avenue, west of the railroad corridor and adjacent to the Hermiston Oregon Maxwell Siding Railroad Museum. The park includes a children’s playground, restrooms, sand volleyball court, pathways, off-street parking, and an interpretive display associated with the Railroad Museum. Pedestrian access is provided by sidewalks on W Highland Avenue.

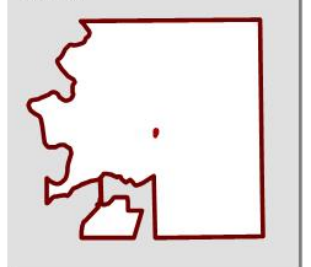


Source: Esri, DigitalGlobe, GeoEye, Earthstar Geographics, CNES/Airbus DS, USDA, USGS, AeroGRID, IGN, and the GIS User Community

LEGEND

- ① Existing amenity
- ① Proposed amenity

INDEX



HODGE PARK

Hermiston Parks, Recreation and Open Space Plan Update



McKenzie Park

Type

- Neighborhood Park

Size

- 2.25 acres

Status

- Developed

Existing Facilities

- Children's playground
- Gazebo
- Picnic shelter
- Picnic tables
- Pathways
- Drinking fountain
- Restrooms
- Kitchen facility (water, sink, electricity)
- Plaza
- Public art
- Historic building

Description

McKenzie Park is located on W Orchard Avenue, between SW 3rd Street and SW 1st Street. The park is bordered by the Municipal Court to the east, Weber Field to the south, and the Post Office to the east. The park includes a children's playground, restrooms, picnic shelters, a gazebo, pathways, and lawn areas. The main feature is a large plaza surrounded by retaining walls, with special paving, lighting, and an art installation at the center consisting of a three-sided clock tower and bell. The park also includes a historic building currently occupied by the Arc, a public agency serving Umatilla County by providing opportunities and protecting the rights of persons with disabilities.



Source: Esri, DigitalGlobe, GeoEye, Earthstar Geographics, CNES/Airbus DS, USDA, USGS, AeroGRID, IGN, and the GIS User Community

LEGEND

- ① Existing amenity
- ① Proposed amenity

INDEX



MCKENZIE PARK

Hermiston Parks, Recreation and Open Space Plan Update



Newport Park

Type

- Neighborhood Park

Size

- 2.70 acres

Status

- Developed

Existing Facilities

- (3) Basketball courts with lighting
- Baseball/softball field with dugouts, bleachers, concessions/restrooms building, fencing, and lighting
- Children’s playground
- Maintenance/storage facility
- Open lawn areas
- Tree plantings

Description

- Newport Park (2.70 acres) is located is a full block bounded by SE 5th Street and SE 6th Street and E Newport Avenue and E Hurlbert Avenue. The park also includes property to the north, across E Hurlbert Avenue, which includes three full basketball courts with lighting. The main park block includes a children’s playground, storage and maintenance facility, and baseball softball field with dugouts, bleachers, concessions/storage building, fencing, and lighting. All of the surrounding streets have curbside sidewalks and there is small drop off area adjacent to the baseball/softball field along SE 6th Avenue.

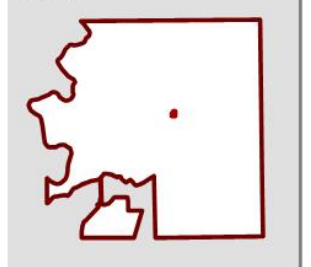


Source: Esri, DigitalGlobe, GeoEye, Earthstar Geographics, CNES/Airbus DS, USDA, USGS, AeroGRID, IGN, and the GIS User Community

LEGEND

- ① Existing amenity
- ① Proposed amenity

INDEX



NEWPORT PARK

Hermiston Parks, Recreation and Open Space Plan Update



Sunset Park

Type

- Neighborhood Park

Size

- 0.82 acres

Status

- Developed

Existing Facilities

- Children's playground
- Open lawn areas
- Tree plantings

Description

- Sunset Park is located at 1100 NE 4th Street and has frontage on NE 4th Street, which is improved with curbside sidewalks. The park is adjacent to a City Public Works operations yard to the east. The driveway access to the yard bisects the park to the south. The park abuts residential property to the north. The park includes a children's playground, open lawn areas, and tree plantings. The playground equipment was recently replaced in 2017.

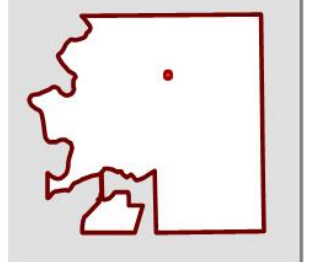


Source: Esri, DigitalGlobe, GeoEye, Earthstar Geographics, CNES/Airbus DS, USDA, USGS, AeroGRID, IGN, and the GIS User Community

LEGEND

- ① Existing amenity
- ① Proposed amenity

INDEX



SUNSET PARK

Hermiston Parks, Recreation and Open Space Plan Update



Victory Square Park

Type

- Neighborhood Park

Size

- 5.16 acres

Status

- Developed

Existing Facilities

- Military memorial
- Interconnected system of pathways
- Children’s playground
- Basketball court
- Sand volleyball court
- Swings
- Picnic shelter
- Drinking fountain
- Restrooms
- Extensive tree plantings

Description

- Victory Square Park is located between W Hermiston Avenue and W Orchard Street, west of SW 10th Street. The park has frontage on all three streets. W Hermiston Avenue and W Orchard Street are improved with curbside sidewalks; SW 10th Street does not have sidewalks. The western portion of the block is developed as medium-density residential housing. The park includes a walking path with several loops throughout the site, children’s playground, picnic shelter, sand volleyball court, basketball courts, swing sets, restrooms, and extensive tree plantings. The main feature is a military memorial in the NE corner of the park with a plaza, rock walls, and a flagpole.

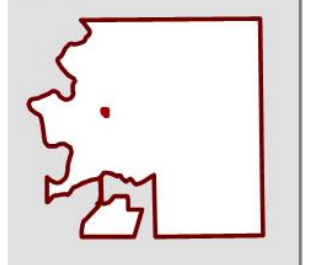


Source: Esri, DigitalGlobe, GeoEye, Earthstar/Geographics, CNES/Airbus DS, USDA, USGS, AeroGRID, IGN, and the GIS User Community

LEGEND

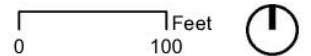
- ① Existing amenity
- ① Proposed amenity

INDEX



VICTORY SQUARE PARK

Hermiston Parks, Recreation and Open Space Plan Update



City of Hermiston
PROS Plan Update
City Facility Assessment

November 18, 2019

Butte Park

Type

- Community Park

Size

- 44.72 acres

Status

- Developed

Existing Facilities

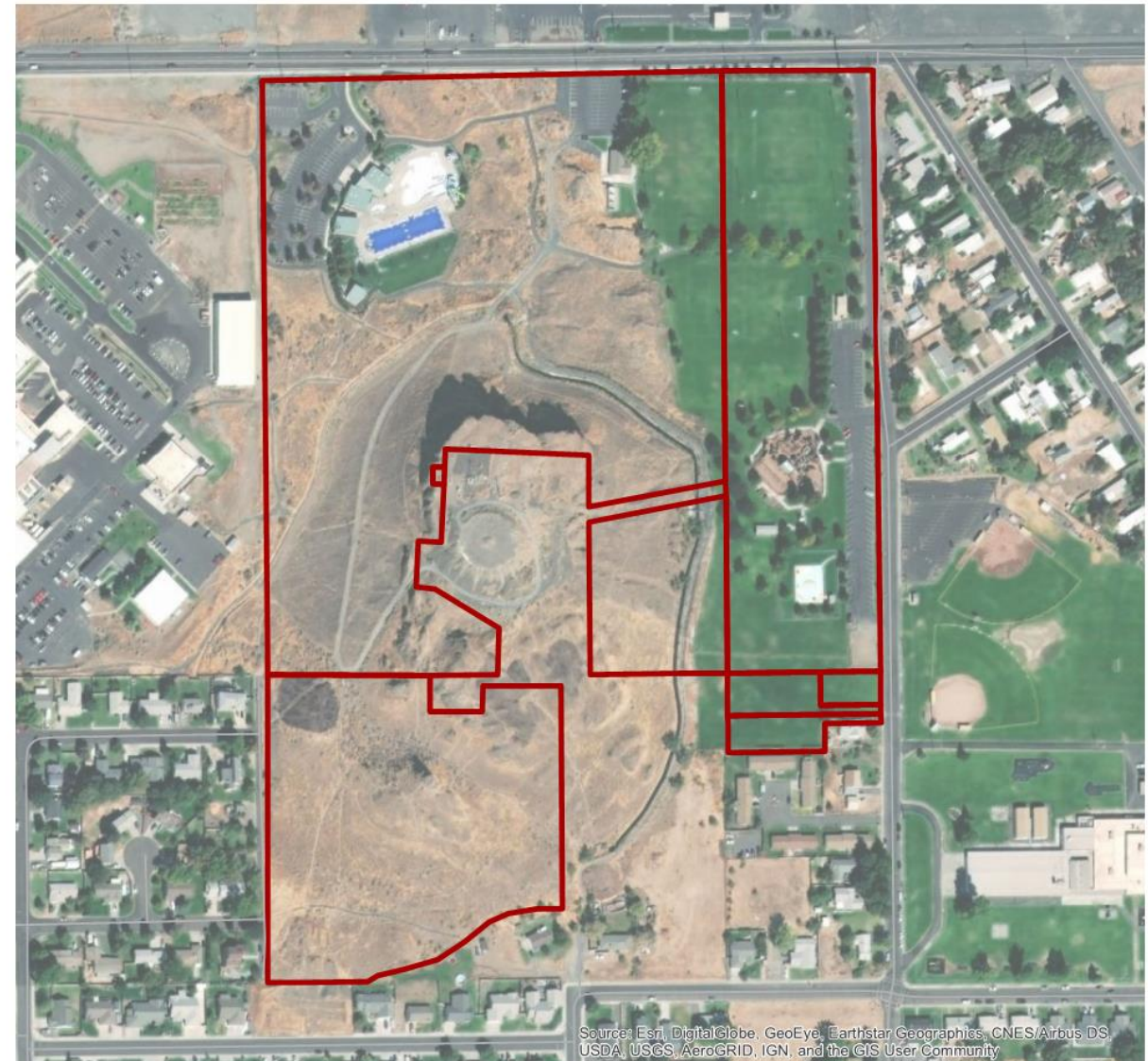
- Hermiston Family Aquatic Center (outdoor pool)
- Funland (children's playground)
- (4) Soccer fields
- Sprayground (splashpad)
- Drinking fountain
- Restrooms
- Maintenance/storage facility
- Picnic shelter
- Picnic tables
- Open lawn areas
- Off-street parking (three locations)
- Tree/landscape plantings

Description

- Butte Park is the largest park in Hermiston and is bounded by Hermiston/Highway 207 to the north, NW 7th Street to the east, residential property to the south, and NW 9th Street and the Good Shepard General Hospital campus to the east. Several sign-family residential properties are located north of W Hartley Avenue and W Hartley Avenue between the streets and the park property. The park features Hermiston Butte, a small butte with a gravel access road and a network of natural hiking trails that lead to scenic views from the top. The hosts the annual Butte Challenge, a foot race of various lengths that supports the Hermiston Cross Country Program. An irrigation canal is located on the east side of Hemiston Butte, between the toe of the butte and the main park.
- The park includes four soccer fields, restrooms, a picnic shelter, sprayground, off-street parking, open lawn areas, and tree plantings. The main feature is **Funland**, an expansive and unique children's playground, which is currently being replaced and renovated following fire damage. Also included is the aquatic center
- The park also includes the **Hermiston Family Aquatic Center**, which features a 50-meter pool, water slide, diving board, concessions, and locker rooms. A line of umbrellas offer shade alongside the pool. A 500 square foot picnic shelter is available for the public to rent.

City of Hermiston
PROS Plan Update
City Facility Assessment

November 18, 2019



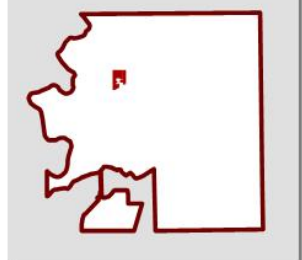
Source: Esri, DigitalGlobe, GeoEye, Earthstar Geographics, CNES/Airbus DS, USDA, USGS, AeroGRID, IGN, and the GIS User Community

LEGEND

① Existing amenity

① Proposed amenity

INDEX



BUTTE PARK

Hermiston Parks, Recreation and Open Space Plan Update

0 300 Feet

Riverfront Park

Type

- Community Park

Size

- 16.36 acres

Status

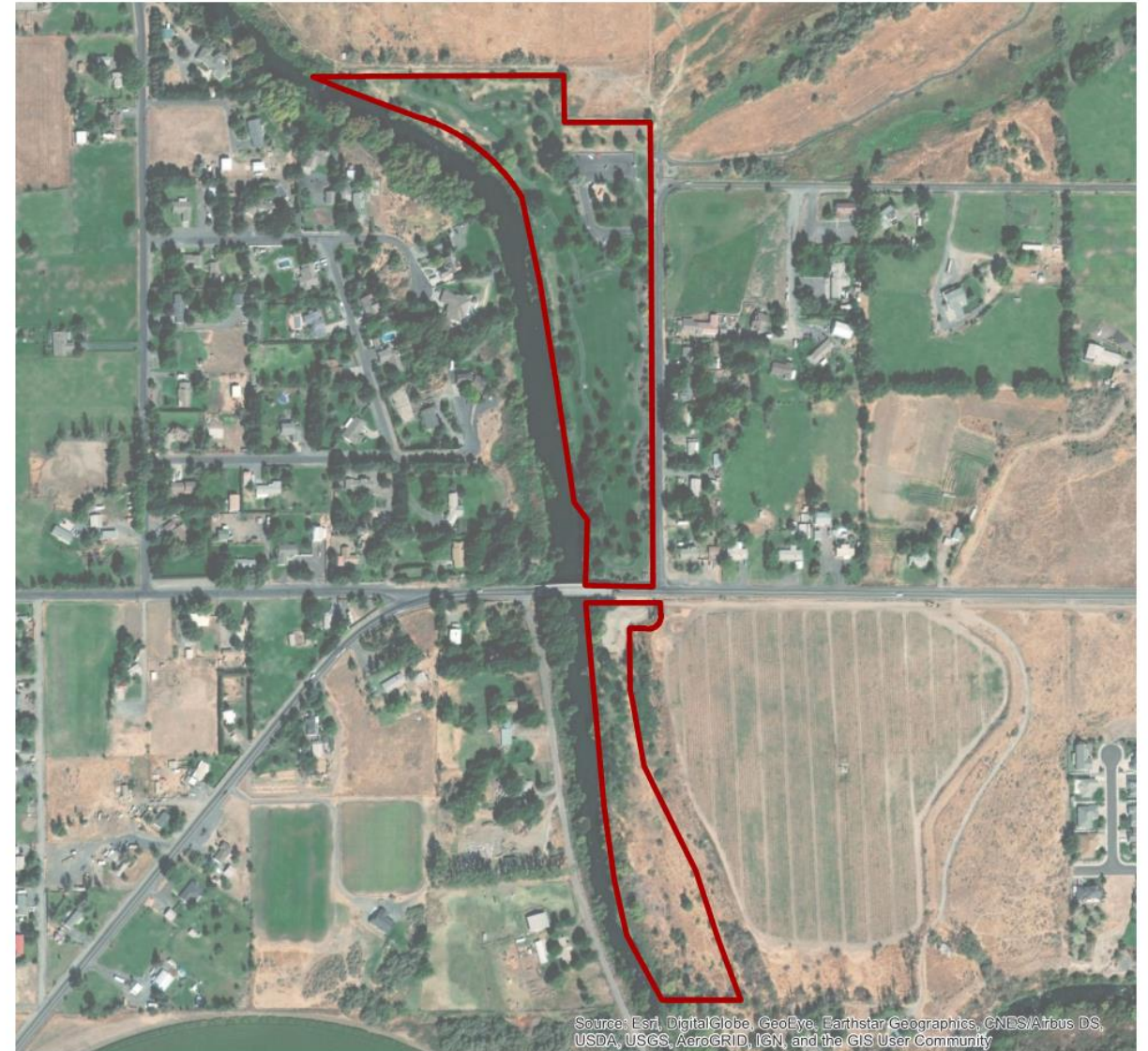
- Developed

Existing Facilities

- Walking path with fitness stations
- Fishing access
- Non-motorized boat launch
- Children's playground
- Picnic shelter
- Drinking fountain
- Restrooms
- Off-street parking
- Tree plantings

Description

- Riverfront Park is located at W Highland Avenue and SW 23rd Street, along the Umatilla River at the west end of Hermiston. The park features an approximately 1-mile walking path with fitness stations that is heavily used by the community. The walking path connects to the Oxbow Trail at the northeast corner of the site. An additional path connection at the south end of the park under County 1200 Road connects the surrounding neighborhood to the park with an off-street trail south of W Highland Avenue. Riverfront Park also includes a children's playground, picnic shelter, restrooms, and off-street parking.

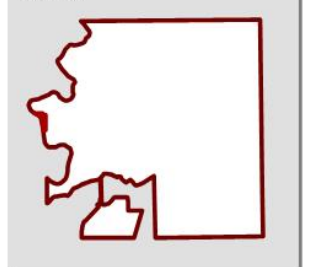


Source: Esri, DigitalGlobe, GeoEye, Earthstar Geographics, CNES/Airbus DS, USDA, USGS, AeroGRID, IGN, and the GIS User Community

LEGEND

- ① Existing amenity
- ① Proposed amenity

INDEX



RIVERFRONT PARK

Hermiston Parks, Recreation and Open Space Plan Update



Theater Sports Park

Type

- Community Park

Size

- 13.79 acres

Status

- Developed

Existing Facilities

- (2) Softball fields with lighting, fencing, dugouts, and backstops
- Unstructured lawn areas
- Children's playground
- Drinking fountain
- Restrooms
- Off-street parking
- Landscape plantings

Description

- Theater Sports Park (13.79 acres) is located at the north end of Hermiston, at 1800 NW 6th Street. The park has access from NW Geer Road and NW 6th Street and is surrounded by industrial property to the east, south, and west and an irrigation canal to the north. The park includes two softball fields with lighting, fencing, dugouts, and backstops, and unstructured turf areas used for football and soccer. The park also includes entry landscape plantings, a children's playground in the SE corner of the site, and off-street parking.

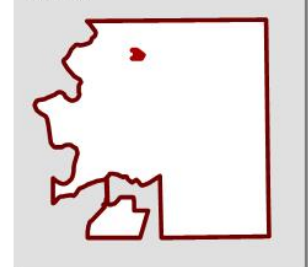


Source: Esri, DigitalGlobe, GeoEye, Earthstar Geographics, CNES/Airbus DS, USDA, USGS, AeroGRID, IGN, and the GIS User Community

LEGEND

- ① Existing amenity
- ① Proposed amenity

INDEX



THEATER SPORTS PARK

Hermiston Parks, Recreation and Open Space Plan Update



Disc Golf Course

Type

- Special Use Park

Size

- 42.09 acres

Status

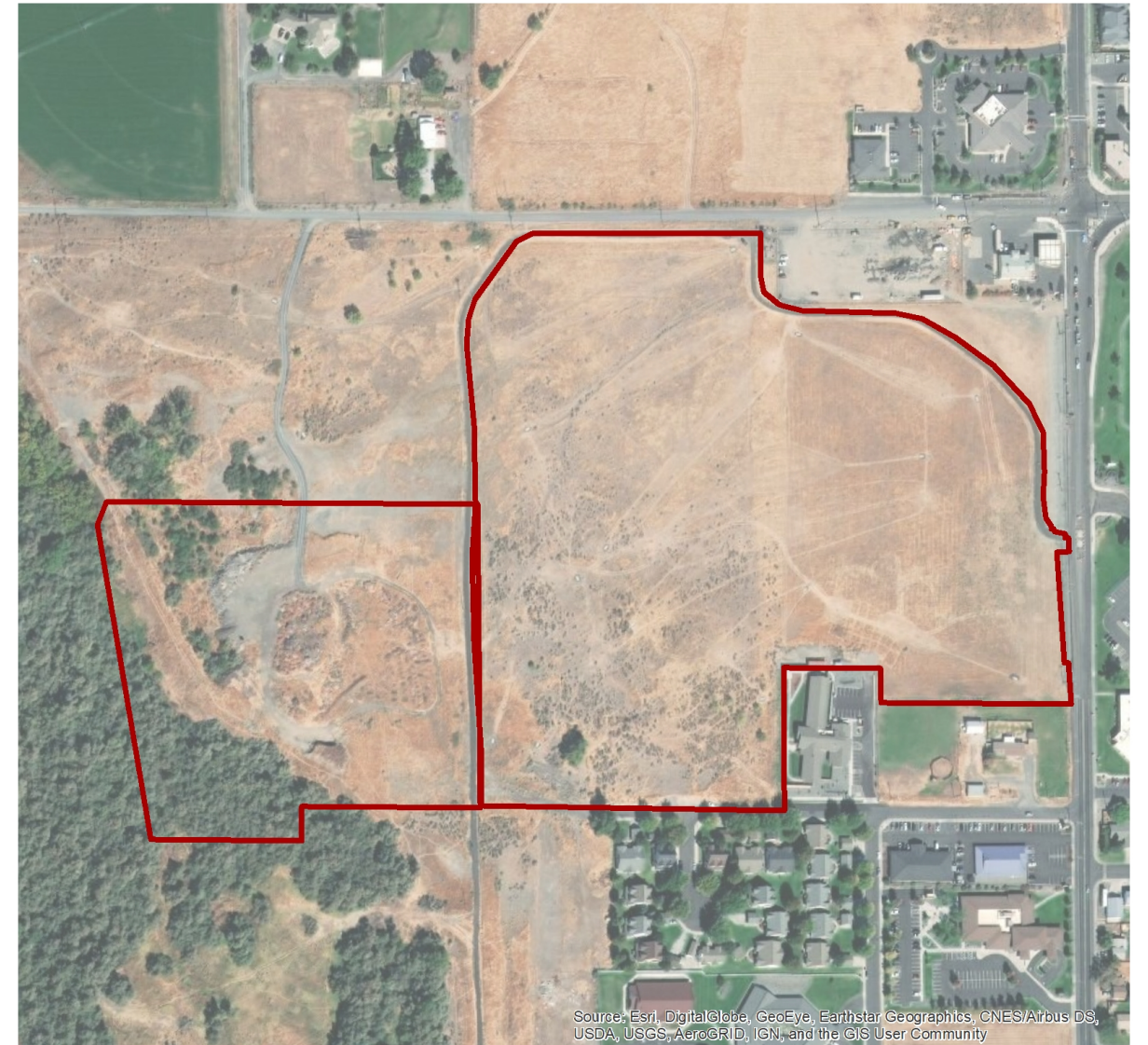
- Developed

Existing Facilities

- Disc golf course
- Gravel parking area

Description

- The Hermiston Disc Golf Course is located in northwest Hermiston at the intersection of W Elm Ave and NW 11th Street. The site has frontage on W Elm Avenue to the north, NW 11th Street to the east, and W Linda Street to the south. The disc golf course, developed in 2017, is located on property owned by the city of Hermiston, the Hermiston Irrigation District and Good Shepherd Health Care System. The site is predominantly undeveloped, and the landscape includes grasses and sparse trees with some elevation change. The disc golf course provides 18 holes with concrete tees and basket holes over 7,502 linear feet. There is a gravel parking lot in the northeast corner of the site.

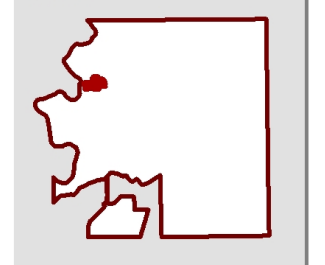


Source: Esri, DigitalGlobe, GeoEye, Earthstar Geographics, CNES/Airbus DS, USDA, USGS, AeroGRID, IGN, and the GIS User Community

LEGEND

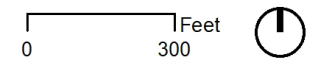
- ① Existing amenity
- ① Proposed amenity

INDEX



DISC GOLF COURSE

Hermiston Parks, Recreation and Open Space Plan Update



Community Center

Type

- Special Use Park

Size

- 2.10 acres

Status

- Developed

Existing Facilities

- Parks and Recreation office
- Meeting rooms
- Performing arts auditorium
- Recreation facilities
- Programs and classes (gymnastics, dance, theater, arts, etc.)

Description

- The Hermiston Community Center is located along High 395, between SE 2nd Street and SE 3rd Street. The Community Center is centrally located in Hermiston, just south of downtown. The center provides offices for the Parks and Recreation department as well as meeting rooms, an auditorium and facilities for numerous programs and classes including gymnastics, dance, theater and the arts. The center was purchased in 1994 by the city.

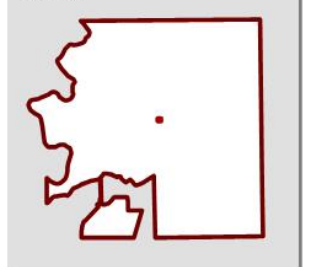


Source: Esri, DigitalGlobe, GeoEye, Earthstar Geographics, CNES/Airbus DS, USDA, USGS, AeroGRID, IGN, and the GIS User Community

LEGEND

- ① Existing amenity
- ① Proposed amenity

INDEX



COMMUNITY CENTER

Hermiston Parks, Recreation and Open Space Plan Update



Highway 395 Park

Type

- Linear Park

Size

- 0.93 acres

Status

- Developed

Existing Facilities

- Pathways
- Benches
- Service organizations monument

Description

- Highway 395 Park (0.93 acres) is located on the west side of Highway 395. The northern end of park starts between E Main Street and E Hurlburt Avenue and extends along Highway 395 to the southern end near SE 2nd Street. The park features a winding walking path with landscape plantings, benches, and a monument to local service organizations.

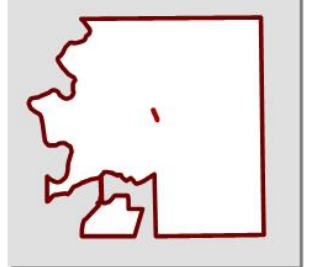


Source: Esri, DigitalGlobe, GeoEye, Earthstar Geographics, CNES/Airbus DS, USDA, USGS, AeroGRID, IGN, and the GIS User Community

LEGEND

- ① Existing amenity
- ① Proposed amenity

INDEX



HIGHWAY 395 PROPERTY

Hermiston Parks, Recreation and Open Space Plan Update



East Hermiston Loop Trail

Type

- Trail

Size

- 3.84 miles

Status

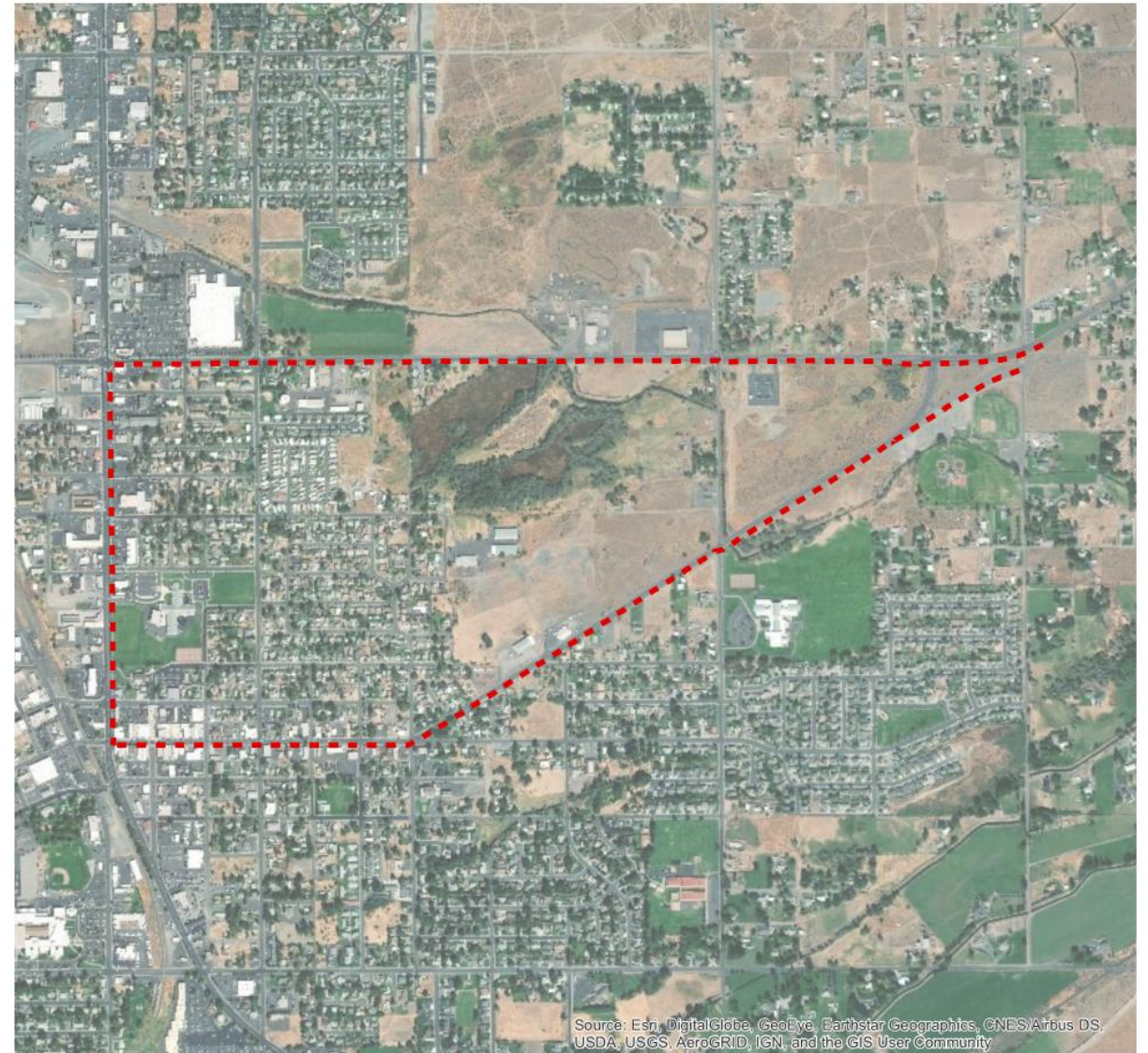
- Developed

Existing Facilities

- Paved on-street and off-street trail

Description

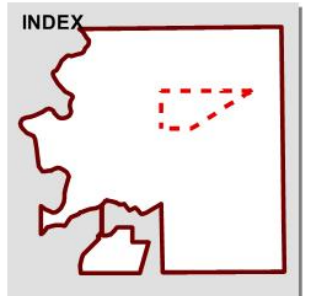
- The East Hermiston Loop Trail is a 3.84 trail along Diagonal Boulevard, E Elm Avenue, E Main Street and N 1st Street. The trail is primarily on-street with an off-street section on Diagonal Blvd.



Source: Esri, DigitalGlobe, GeoEye, Earthstar Geographics, CNES/Airbus DS, USDA, USGS, AeroGRID, IGN, and the GIS User Community

LEGEND

- ① Existing amenity
- ① Proposed amenity



EAST LOOP TRAIL

Hermiston Parks, Recreation and Open Space Plan Update



West Hermiston Loop Trail

Type

- Trail

Size

- 6.78 miles

Status

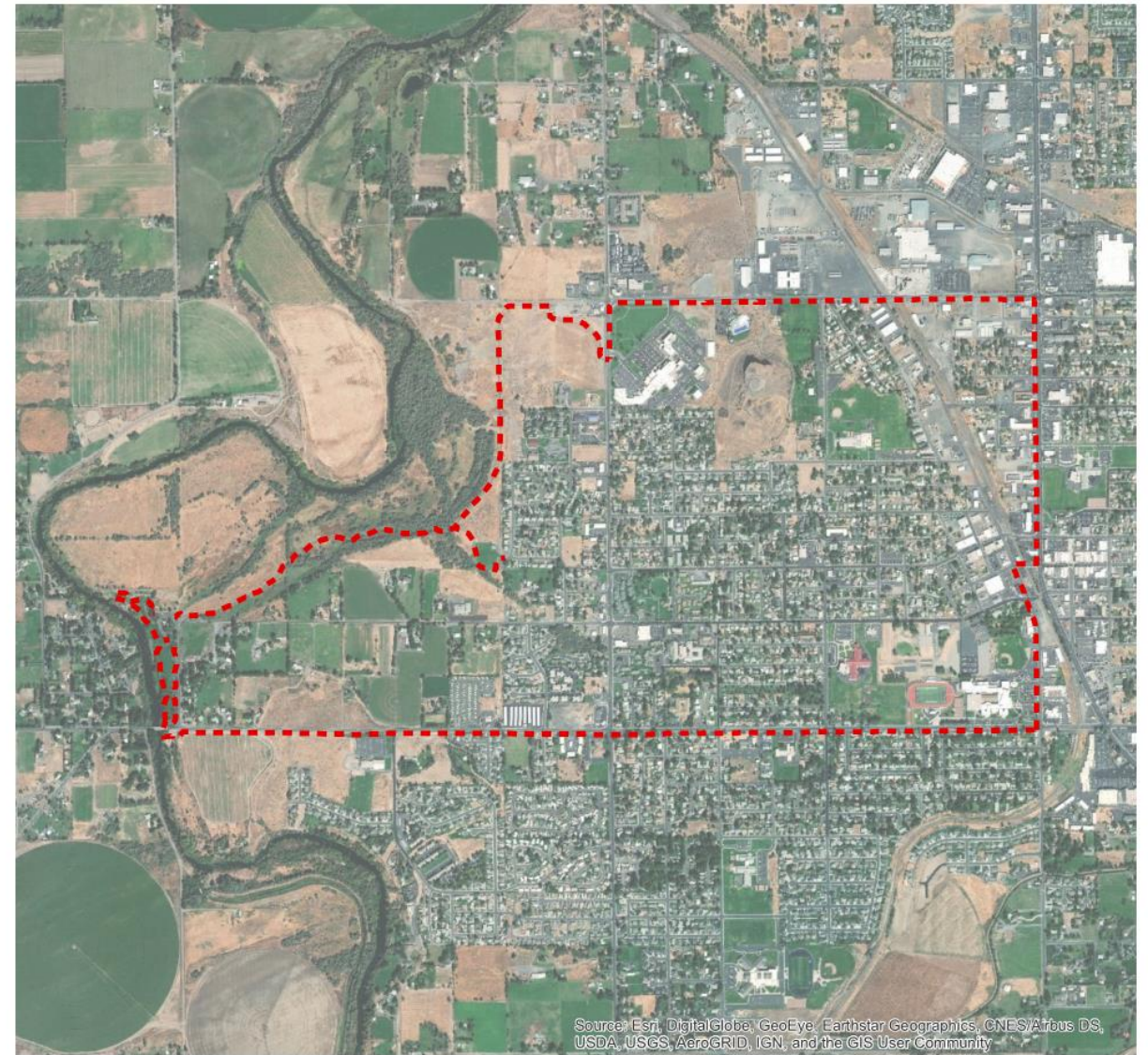
- Developed

Existing Facilities

- Paved on-street and off-street trail

Description

- The West Hermiston Loop Trail is a 6.78-mile trail in the northwest part of Hermiston. The trail follows an off-street and then on-street segment along Highland Avenue before running north along 1st Street and travelling through downtown and continuing north before turning west along W Elm Avenue near Good Shepherd Hospital and connecting with the off-street Oxbow Trail segment at 11th Street and travelling southwest towards Riverfront Park.

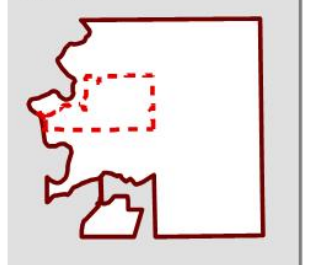


Source: Esri, DigitalGlobe, GeoEye, Earthstar Geographics, CNES/Airbus DS, USDA, USGS, AeroGRID, IGN, and the GIS User Community

LEGEND

- ① Existing amenity
- ① Proposed amenity

INDEX



WEST LOOP TRAIL

Hermiston Parks, Recreation and Open Space Plan Update





School District Inventory

- ▶ *OVERVIEW*
- ▶ *INVENTORY*
- ▶ *PLANNED FACILITIES*
- ▶ *PARTNERSHIP*
- ▶ *SUMMARY*

City of Hermiston Parks, Recreation and Open Space (PROS) Plan Update

To: Larry Fetter, Parks and Recreation Director
City of Hermiston

From: Colin McArthur, AICP
Liz Auvil
Kelsey Zlevor

Date: November 18, 2019

Subject: School District Facility Assessment

1.0 OVERVIEW

School playgrounds and recreational facilities provide a variety of active and passive recreation opportunities designed to serve a certain age group, children and youth, within the community. Residents in the community have the potential to utilize school facilities for active and passive uses during non-school hours. Elementary and middle or junior high schools may offer playgrounds and sports facilities. High schools tend to offer solely sport facilities. This assessment includes an inventory of recreational facilities provided by Hermiston School District 8R. This assessment is intended to complement the City Facility Assessment conducted as part of the Park, Recreation and Open Space (PROS) Plan Update and inform long-term strategic planning and capital investments by both the City and the School District.

Hermiston School District is the largest district in Eastern Oregon, exceeding 5,600 students, and continues to experience steady enrollment growth. The District serves students in grades kindergarten through 12 and includes a 9-12 senior high school, two 6-8 middle schools, and five K-5 elementary schools. The data included in this assessment are based on site visits to existing facilities and information in the Hermiston School District 2018-2040 Facility Master Plan.¹

The District has received strong support from the community. In 2001, voters approved a \$39 million building program which included the reconstruction of the high school, an additional elementary school, and various district-wide renovations. In 2008, voters approved a \$69.9 million bond to replace Armand Larive Middle School, West Park Elementary, and Sunset Elementary. In 2019, voters approved a \$82.7 million bond to replace Rocky Heights Elementary School, construct a new elementary school, construct a multi-classroom annex at Hermiston High School, and to fund site improvements and purchase property for anticipated student capacity demands.

¹ Hermiston School District. Facility Master Plan; 2018-2040. Facility Planning Committee. June 2018.

2.0 PARTNERSHIP

The City of Hermiston and the Hermiston School District understand that working cooperatively is a priority in accomplishing their respective missions. This close collaboration and planning will ultimately benefit all residents of Hermiston with an improved quality of life and services. The City has openly supported the passage of construction levy's proposed by the District. The District has made its facilities available for public uses managed by the Parks and Recreation Department. Over the years, the City and District have established three agreements that serve as example of their collaboration and success.

1. The Rocky Heights Agreement
2. The Harkenrider Senior Center Agreement
3. The Facility Use Agreement

This Parks, Recreation and Open Space Plan is the most recent example of cooperative planning for the future. Both agencies have invested in the development of this plan and pledge to consult each other where there may be a public benefit related to enhancing playgrounds, recreation facilities, afterschool programs, safe routes to schools, and other opportunities. Both agencies feel the pressures associated with steady population growth and demands for new facilities and programs. Collaborative planning and development can reduce the stresses and minimize the duplication of facilities where possible.

Both agencies recognize the growing demand for youth recreation. The most noticeable current demand and growth trend is for soccer and lacrosse. These programs require a significant amount of turf for practices and games. Both programs are organized and managed by local volunteer associations. Neither the City or the District has sufficient turf available to meet the current demand and future needs. However, both agencies desire to support these youth associations with facilities to meet their future needs.

In this PROS Plan, the City and District explore development of enhancing the Field of Dreams Complex, Soccer/Lacrosse Sports Complex, and a new park adjacent to Armond Larive Middle School. These facility concepts represent an exercise in possible facility development and should not be construed as commitments by either agency. These facility concepts do have value and should be more fully explored. These and other project that provide a mutual benefit should be examined and considered on an ongoing and routine basis.

3.0 INVENTORY

The Hermiston School District owns **eight** developed school facilities that comprise 232.39 acres of developed school campus lands.

- Hermiston High School
- Armand Larive Middle School
- Sandstone Middle School
- Desert View Elementary School
- Highland Hills Elementary School
- Rocky Heights Elementary School

City of Hermiston
PROS Plan Update
School District Facility Assessment

November 18, 2019

- Sunset Elementary School
- West Park Elementary School

3.1 Developed School Facilities

Hermiston High School

Location: 600 S 1st Street

Campus Size: 53.14 acres

School Size: 280,577 square feet. Constructed in 1992, expanded in 2001.

Recreation Facilities:

- (1) Running track and field event areas
- (1) Football/Soccer field, synthetic turf
- (1) Stadium for football, soccer, and track and field with lighting, concessions, storage, and restrooms
- (1) Baseball field (Weber Field), senior, including lighting, bleachers, dugouts, press box, backstop, storage, and batting cages.
- (2) Multipurpose practice fields
- (4) Tennis courts
- The campus includes the old Umatilla County fairgrounds.

Notes: The 2019 Bond includes funding to construct a multi-classroom annex to add capacity to the school, and reconstruct 2 softball fields.

Armand Larive Middle School

Location: 1497 SW 9th Street

Campus Size: 42.73 acres

School Size: 115,000 square feet. Constructed in 2011.

Recreation Facilities:

- (1) Running track and field event areas
- (1) Football/Soccer field
- (1) Baseball field with lighting, bleachers, dugouts, press box, backstop, storage and batting cages.
- (1) Stadium for football, soccer, and track and field with lighting, concessions, storage, and restrooms
- (1) Multipurpose practice field
- (4) Tennis counts

City of Hermiston
PROS Plan Update
School District Facility Assessment

November 18, 2019

Sandstone Middle School

Location: 400 NE 10th Street

Campus Size: 67.17 acres

School Size: 85,000 square feet. Constructed in 1995.

Recreation Facilities:

- (4) Tennis courts
- (4) Unstructured practice fields

Desert View Elementary School

Location: 1225 SW 9th Street

Campus Size: 14.26 acres

School Size: 50,817 square feet. Constructed in 2001.

Recreation Facilities:

- (2) Children's playground
- (5) Basketball courts (half-court)
- Open field area

Highland Hills Elementary School

Location: 450 SE 10th Street

Campus Size: 5.77 acres

School Size: 50,788 square feet. Constructed in 1980.

Recreation Facilities:

- (1) Children's playground including six separate facilities
- (7) Basketball courts (half-court)
- Open field area

Rocky Heights Elementary School

Location: 650 W Standard Avenue

Campus Size: 21.12 acres

School Size: 50,788 square feet. Constructed in 1962.

Recreation Facilities:

City of Hermiston
PROS Plan Update
School District Facility Assessment

November 18, 2019

- (2) Softball fields with dugouts, seating, backstops, and fencing
- (2) Soccer fields
- (1) Children's playground including nine separate features

Notes: The 2019 Bond includes funding to replace the school with a larger 600-student capacity building on the current property. The new school will displace the existing varsity and junior varsity softball fields.

Sunset Elementary School

Location: 300 E Catherine Avenue

Campus Size: 14.82 acres

School Size: 61,423 square feet. Constructed in 2011.

Recreation Facilities:

- (1) Children's playground
- (4) Tennis courts
- (2) Multipurpose practice fields
- Open field area

West Park Elementary School

Location: 555 SW 7th Street

Campus Size: 13.38 acres

School Size: 61,423 square feet. Constructed in 2010.

Recreation Facilities:

- (1) Children's playground
- (1) Multipurpose practice field
- (5) Basketball half court
- Open field area

3.2 Developed Other Facilities

The Hermiston School District owns **one** other facility that is used for recreation.

Field of Dreams

Location: E Hooker Road & County 1217 Road

Campus Size: Included in Sandstone Elementary School acreage.

City of Hermiston
PROS Plan Update
School District Facility Assessment

November 18, 2019

School Size: N/A

Recreation Facilities:

- (5) Ball fields with dugouts, seating, backstops, fencing, and lighting
- (1) Field operations building with restrooms and concessions

Notes: The site is owned by the school district and maintained by the Hermiston Little League Association.

3.3 Undeveloped Facilities

The Hermiston School District owns **two** other undeveloped facilities.

Vacant Property at E Theater Lane and NE 10th Street

Taxlot: 4N2802A000502

Size: 19.1 acres

Vacant Property South of Armand Larive Middle School

Taxlots: 4N2815CA01300, 4N2815CA00300, 4N2815CA00400, 4N2815CA00500, 4N2815CA00600, 4N2815CA00700, 4N2815CA00800, and 4N2815CA00900

Size: 11.06 acres

3.4 Facility Summaries

Table 3.1. Developed Facilities Summary includes a list of all developed School District facilities and their associated size. The School District owns and maintains 232.39 acres of developed school campus land.

City of Hermiston
PROS Plan Update
School District Facility Assessment

November 18, 2019

Table 3.1. Developed Facilities Summary

FACILITY	SIZE (ACRES)
Hermiston High School	53.14
Armand Larive Middle School	42.73
Sandstone Middle School	67.17
Desert View Elementary School	14.26
Highland Hills Elementary School	5.77
Rocky Heights Elementary School	21.12
Sunset Elementary School	14.82
West Park Elementary School	13.38
TOTAL	232.39

Table 3.2. Undeveloped Facilities Summary includes a list of all undeveloped School District facilities and their associated size. The School District owns 30.16 acres of vacant, undeveloped land.

Table 3.2. Undeveloped Facilities Summary

FACILITY	SIZE (ACRES)
Property at E Theater Lane and NE 10th Street	19.10
Property South of Armand Larive Middle School	11.06
TOTAL	30.16

The vacant property at Theater Lane is planned for new elementary school as part of the 2019 Bond projects. The vacant areas south of Armand Larive Middle School are planned for additional student built houses and a possible neighborhood park.

Table 3.3. Facility Type Summary includes a summary of all the major recreation facilities and amenities within School District owned campus lands, their type, and quantity.

City of Hermiston
PROS Plan Update
School District Facility Assessment

November 18, 2019

Table 3.3. Facility Type Summary

FACILITY	QUANTITY
Stadium	2
Running track/field, synthetic	2
Football field, synthetic	1
Soccer field, synthetic	1
Football field, natural	1
Soccer field, natural	3
Lacrosse field	0
Ball fields, senior	2
Ball fields, junior	5
Softball field	2
Multipurpose practice fields	9
Open field area, unstructured	4
Basketball courts, half-court	17
Tennis courts	16
Children's playground, non-traditional ²	2
Children's playground, traditional ³	4

² Non-traditional playgrounds refer to play features constructed prior to 1990 and distributed throughout a site. These features may include swings, teeter totters, climbing apparatus, parallel/uneven bars, and other similar features and are typically constructed of wood or steel.

³ Traditional playgrounds refer to consolidated play structure(s) for ages 1-5 or 5-12 and may include other features such as swings, spinners, and climbers. Traditional playgrounds are common in neighborhood parks and schools constructed after 1990.

4.0 PLANNED FACILITIES

4.1 2019 Bond Projects

Hermiston School Bond Measure 30-130 was approved by voters in 2019 and will raise \$82,735,000 through bonds. The funds will be used for the following main projects:

- Replace Rocky Heights Elementary School with a larger 600-student capacity building on the current property
- Construct a new 600-student elementary school on the district's Theater Lane property
- Construct a multi-classroom annex to add capacity at Hermiston High School
- Construct elementary school site improvements to address capacity and congestion issues
- Purchase property for anticipated student capacity demands

4.2 Land Acquisition

The School District owns sufficient property for near-term expansion; however, in the long-term additional property will be required assuming enrollment growth continues as projected. As noted above, the 2019 Bond includes funds for purchasing property.

5.0 SUMMARY

Following is a summary of key findings from the School District Facility Assessment

- The vacant property south of Armand Larive Middle School is located in an area of the City that is underserved by parks and has the potential to be developed as park land.
- There is only one designated synthetic turf football/soccer field in the District.
- There are only three dedicated natural turf soccer fields in the District.
- There are no designated lacrosse fields in the District.
- The quantity and size of multipurpose practice fields and open field area provides opportunity to convert space to designated sports fields.
- Children's playgrounds at school sites are either non-traditional or traditional and located in areas of school campuses that are difficult to access or far from adjacent neighborhoods. Their potential to provide neighborhood recreation opportunities is limited. The playgrounds also do not support universal access.
- The District includes an extensive quantity of tennis courts and half-court basketball courts.
- There is potential for joint City park and School District facility development as part future school development.

APPENDIX A SITE INVENTORY MAPS

City of Hermiston
PROS Plan Update
School District Facility Assessment

November 18, 2019

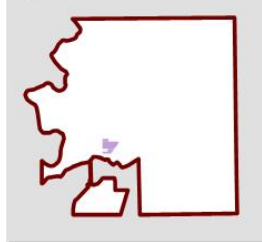


Source: Esri, DigitalGlobe, GeoEye, Earthstar Geographics, CNES/Airbus DS, USDA, USGS, AeroGRID, IGN, and the GIS User Community

LEGEND

School District Facility

INDEX



ARMAND LARIVE MIDDLE SCHOOL
Hermiston Parks, Recreation and Open Space Plan Update



City of Hermiston
PROS Plan Update
School District Facility Assessment

November 18, 2019

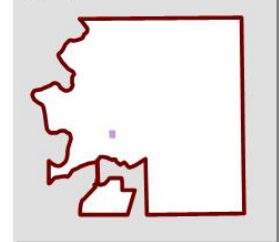


Source: Esri, DigitalGlobe, GeoEye, Earthstar Geographics, CNES/Airbus DS, USDA, USGS, AeroGRID, IGN, and the GIS User Community

LEGEND

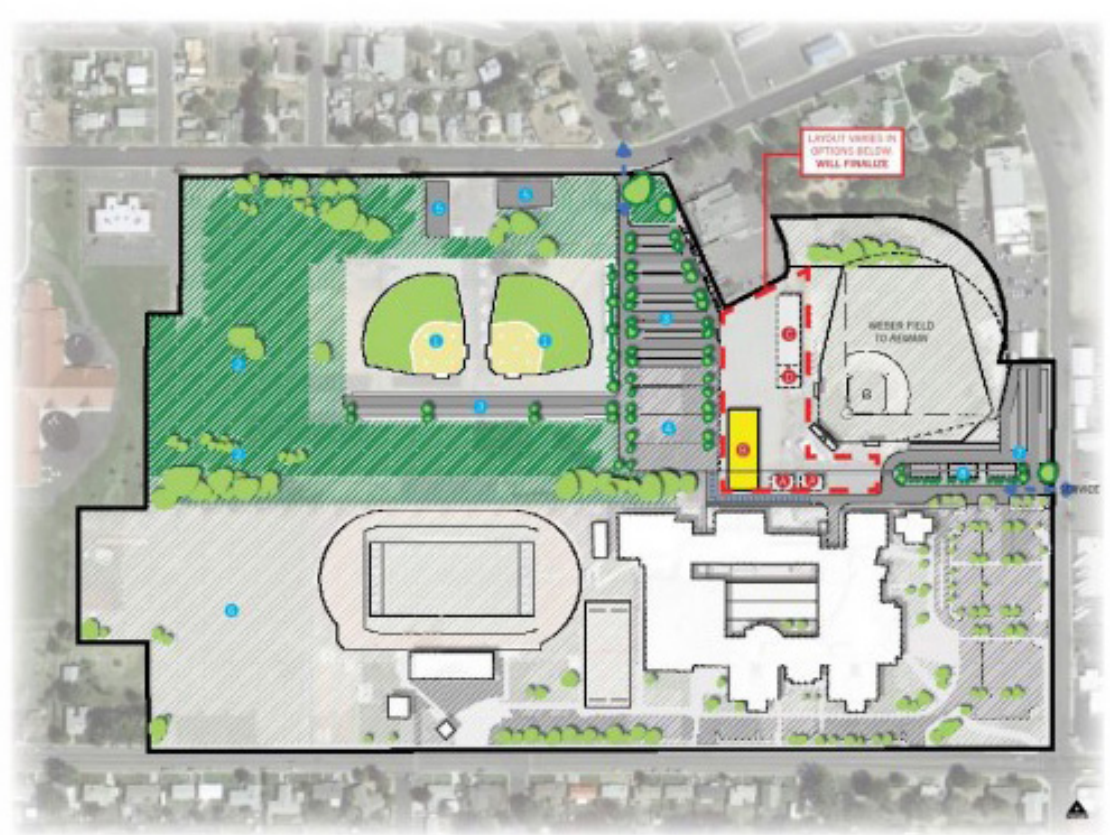
School District Facility

INDEX



DESERT VIEW ELEMENTARY SCHOOL
Hermiston Parks, Recreation and Open Space Plan Update





HERMISTON SCHOOL DISTRICT HERMISTON HIGH SCHOOL / WEBER FIELD IMPROVEMENTS

- REPLACEMENT GREENHOUSES (2)
- AG CLASSROOM ASSOCIATED WITH GREENHOUSES
- HITTING FACILITY
- RESTROOMS / CONCESSIONS

- REPLACEMENT SOFTBALL FIELDS
- FUTURE FIELDS
- NEW PARKING
- EXISTING PARKING
- EXISTING BUILDINGS TO REMAIN
- EXISTING PRACTICE FIELDS
- EXISTING PARKING TO BE MODIFIED
- FUTURE MOBILE CLASSROOM LOCATION

- MAIN ACCESS ROAD
- SERVICE ACCESS ROAD (NOT FOR PUBLIC USE)
- NEW TREES
- EXISTING TREES

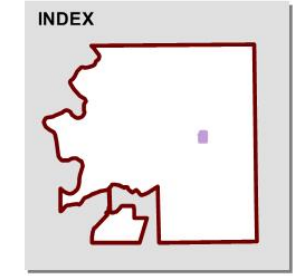
HERMISTON HIGH SCHOOL
Hermiston Parks, Recreation and Open Space Plan Update

YEH ARCHITECTURE / LKV ARCHITECTURE
01-14-2019



Source: Esri, DigitalGlobe, GeoEye, Earthstar Geographics, CNES/Airbus DS, USDA, USGS, AeroGRID, IGN, and the GIS User Community

LEGEND
 School District Facility



HIGHLAND HILLS ELEMENTARY SCHOOL
Hermiston Parks, Recreation and Open Space Plan Update



City of Hermiston
PROS Plan Update
School District Facility Assessment

November 18, 2019

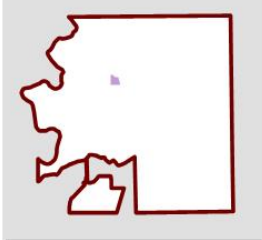


Source: Esri, DigitalGlobe, GeoEye, Earthstar Geographics, CNES/Airbus DS, USDA, USGS, AeroGRID, IGN, and the GIS User Community

LEGEND

School District Facility

INDEX



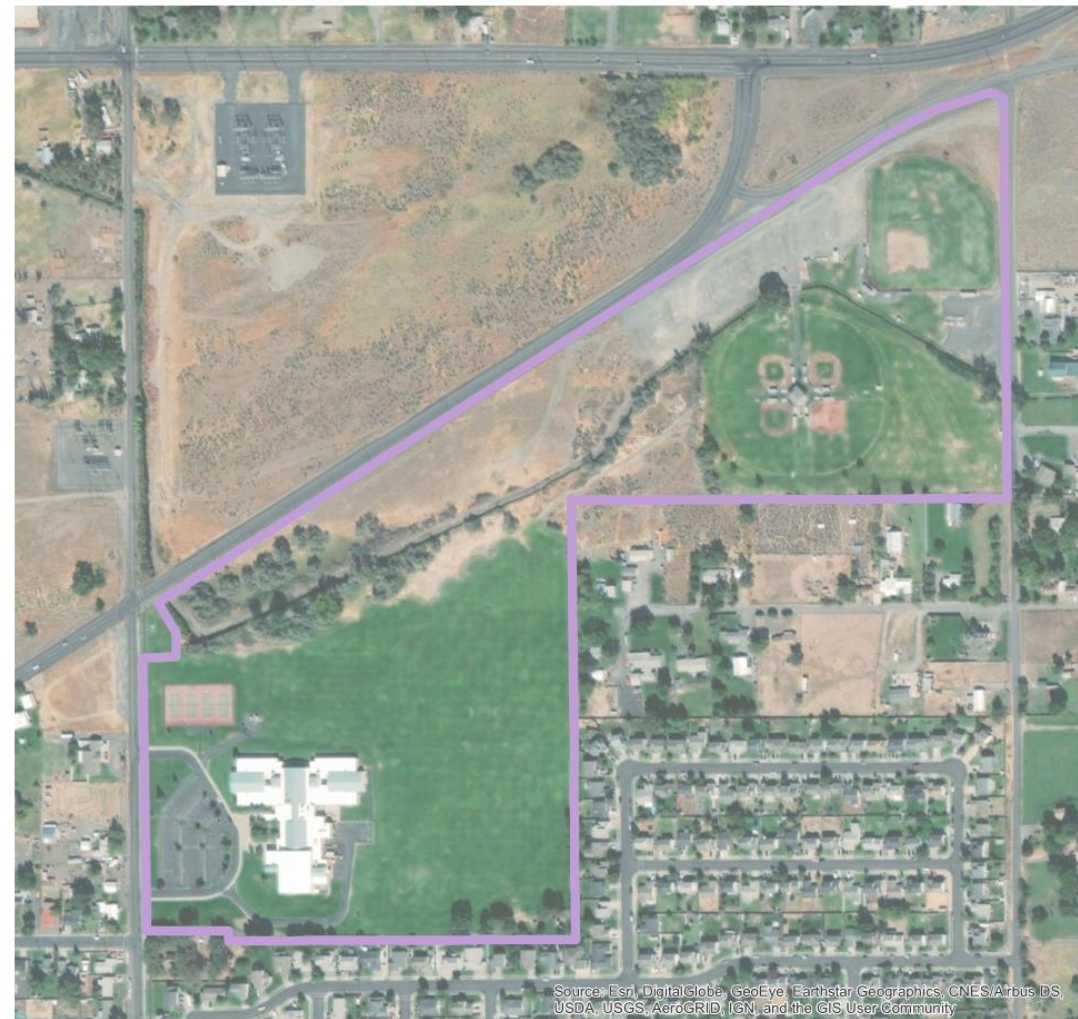
ROCKY HEIGHTS ELEMENTARY SCHOOL

Hermiston Parks, Recreation and Open Space Plan Update



City of Hermiston
PROS Plan Update
School District Facility Assessment

November 18, 2019

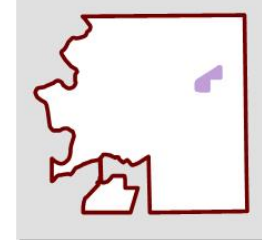


Source: Esri, DigitalGlobe, GeoEye, Earthstar Geographics, CNES/Airbus DS, USDA, USGS, AeroGRID, IGN, and the GIS User Community

LEGEND

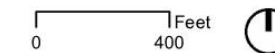
School District Facility

INDEX



SANDSTONE MIDDLE SCHOOL

Hermiston Parks, Recreation and Open Space Plan Update



City of Hermiston
PROS Plan Update
School District Facility Assessment

November 18, 2019

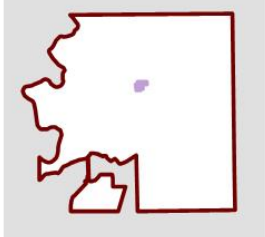


Source: Esri, DigitalGlobe, GeoEye, Earthstar Geographics, CNES/Airbus DS, USDA, USGS, AeroGRID, IGN, and the GIS User Community

LEGEND

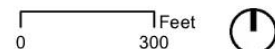
 School District Facility

INDEX



SUNSET ELEMENTARY SCHOOL

Hermiston Parks, Recreation and Open Space Plan Update



City of Hermiston
PROS Plan Update
School District Facility Assessment

November 18, 2019

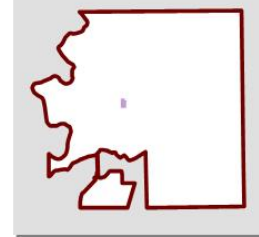


Source: Esri, DigitalGlobe, GeoEye, Earthstar Geographics, CNES/Airbus DS, USDA, USGS, AeroGRID, IGN, and the GIS User Community

LEGEND

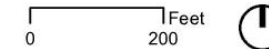
 School District Facility

INDEX



WEST PARK ELEMENTARY SCHOOL

Hermiston Parks, Recreation and Open Space Plan Update





City of Hermiston
PROS Plan Update
School District Facility Assessment

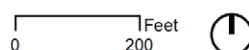
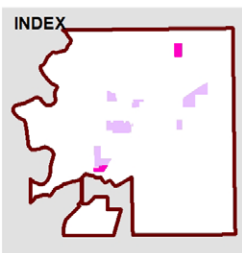
November 18, 2019



Source: Esri, DigitalGlobe, GeoEye, Earthstar Geographics, CNES/Airbus DS, USDA, USGS, AeroGRID, IGN, and the GIS User Community

LEGEND

-  School District Facility
-  Vacant School District Property



**UNDEVELOPED PROPERTY
SOUTH OF LARIVE MIDDLE SCHOOL**

Hermiston Parks, Recreation and Open Space Plan Update


City of Hermiston
PROS Plan Update
School District Facility Assessment

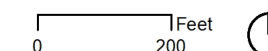
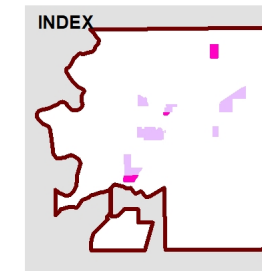
November 18, 2019



Source: Esri, DigitalGlobe, GeoEye, Earthstar Geographics, CNES/Airbus DS, USDA, USGS, AeroGRID, IGN, and the GIS User Community

LEGEND

-  Vacant School District Property



**UNDEVELOPED PROPERTY
E THEATER LANE & NE 10TH STREET**

Hermiston Parks, Recreation and Open Space Plan Update



Focus Groups

- ▶ *HISPANIC ADVISORY COMMITTEE*
- ▶ *CHAMBER OF COMMERCE*
- ▶ *YOUTH*

City of Hermiston Parks, Recreation and Open Space (PROS) Master Plan Update

Hispanic Advisory Committee Focus Group Meeting Notes

Date: Wednesday, September 11, 2019

Time: 12:00pm – 1:00pm

Location: Community Center (415 S Hwy 395, Hermiston, OR 97838)

Overview

- Introductions
- Goals

Concerns

- Currently the public must reserve park facilities (e.g. picnic shelters) to use them. There is a need for first-come, first-serve picnic shelters (non-reservable) for the community. The Hispanic community needs flexibility with amenities and quick, easy access especially on Saturday and Sunday. Extended hours for park amenities would help as well.
- Pool access :
 - Often there is no one to take children when parents are working. Expanded pool hours would help parents take children to pool.
 - There is a fear of water in the Hispanic community.
 - Workshops for adult swimming may help with fears.
 - Current 2nd grade swim program is helpful for younger kids.
 - Swimming pool is perceived as a luxury and there is low awareness about program for low-income families.
 - Low income pool hours/free swim could be a pilot project. A weekend to promote the pilot with low or no cost.
 - Year-round pool access would support the Hispanic community more because it would be accessible beyond the harvest season.
 - Increase partnership with Kayak Public Transit to decrease physical access barriers to pool.
 - A simultaneous adult swim class and children swim class could be popular with families.
- Continue indoor soccer program in gymnasiums.
- Need for additional outdoor field space as there is a lack of fields for soccer.

Opportunities

- Increase opportunity for a variety of food vendors at soccer complex/games.
- Soccer is the most popular sport, but there is a lot of interest to expand sports/activities to include youth basketball, youth biking and fishing/water access.

City of Hermiston Parks, Recreation and Open Space (PROS) Master Plan Update Hispanic Advisory Committee Focus Group Agenda

September 11, 2019

- Expand trail system.
- More neighborhood parks on the East side of Hermiston.
- Add parks in areas with high Hispanic populations (Sunset park is highly utilized by children).
- Add parks near future housing developments.
- NE and SE areas of Hermiston have fewer parks.
- Library and parks partnership may include activities like reading in the parks (reading in Spanish and welcome Hispanic families and kids). Free activity after the reading may connect reading with park activities (e.g. read a book about fishing or fish in a park and then go fishing in the park). Potential support from volunteers to run program.
- Safe biking opportunities for youth (more trail miles).

Wrap-Up

Survey will be posted to the city website soon.

City of Hermiston Parks, Recreation and Open Space (PROS) Master Plan Update

Hispanic Advisory Committee Focus Group Part 2 Notes

Date: Monday October 21, 2019

Time: 7:00pm – 8:00pm

Location: Hermiston City Hall Council Chambers (180 NE 2nd Street)

Attendees: Roy Barron, Hector Ramirez, Mark Gomolski, Jose Garcia, Jonathan Lopez Nazario Rivera, Manuel Gutierrez (Hispanic Advisory Committee), Larry Fetter (Hermiston Parks and Recreation), Colin McArthur, Liz Auvil (Cameron McCarthy)

1. About the Hermiston PROS Update

- a. Introductions
- b. Overview of the process and timeline

2. Overview of Current Parks System

Condition of parks system is good (and has improved over the years) and there is a lot to do. The committee represented both relatively new and long-term residents to Hermiston. The committee shared the Hispanic and Latinx community may not know where parks are located or feel the parks belong to them.

3. Concerns

- Additional feedback included that park reservations are a barrier for the Hispanic community.
- Need for indoor facility with pool and basketball, venue for small event rentals, after school activities (Boardman facility was referenced)
- Language barriers limit parks and recreation activities for children. Additional activities in Spanish.
- Swimming lessons
 - Children do not have transportation to swim lessons if both parents work in the fields for long hours in the summer.
 - Language barrier between children with English as a second language and English-speaking pool staff/swim instructors, and parents aren't comfortable not being present at swim lessons.
 - Extending hours for swim lessons and providing Spanish-speaking staff.
 - Seasonal conflict – swim opportunities in winter allow more flexibility for Latino families to participate.
 - Swim program within school year may also help because parents have established relationship and trust with their child's teacher.

City of Hermiston Parks, Recreation and Open Space (PROS) Master Plan Update Hispanic Advisory Committee Focus Group Agenda

October 21, 2019

- Outreach in Hispanic community
 - Communicate through community advocates.
 - Fliers at school may not get home to parents but promoting events where Hispanic mothers and fathers spend time in community is more likely to be received. Tap into the community gathering places.
 - Put ads on the tv and radio. Parents may listen to radio in the fields or at work.
 - Schedule activities after work so parents can attend (consider time constraints of different work schedules)

4. Opportunities

- Annual Hispanic Art Fair. Showcase artists from Hispanic communities in Oregon. Invite art professors and artists from around Oregon to contribute to the fair and judge artwork for awards.
- Ideas for community mural and/or park name referencing Hispanic culture.
- First-come first-serve amenities or a Spanish training on how to reserve amenities online may help welcome Latinos and Latinas to the parks.
- Improve/expand soccer fields
- Outdoor/Indoor event rental venues for weddings, Quinceaneras, and other celebrations/events.
- Outdoor basketball courts
- Indoor/outdoor volleyball courts
- Signage and promote locations for park system.
- More grilling stations in parks, supports opportunity for fellowship and make new friends.
- Wintertime activity like an ice rink or other indoor facility.
- Additional trail connections (Highland Hills trails)
- Supporting equestrian recreation opportunities
- Adults-only pool area; adult swim classes
- More picnic tables
- Cinco de Mayo
- Renovation to Newport Park

5. Wrap-Up

- McArthur thanked the committee for their time and feedback; also mentioned the bilingual online survey is active and can be found on the city's website. McArthur asked the committee to promote the survey among their community.

City of Hermiston Parks, Recreation and Open Space (PROS) Master Plan Update

Chamber of Commerce Focus Group Meeting Notes

Date: Thursday, October 10, 2019

Time: 12:00pm – 12:45pm

Location: Community Center (415 S Hwy 395, Hermiston, OR 97838)

Overview

- Introductions
- Goals

General Opinion of Current Park System

- We need more areas for youth sports so it's less crowded
- Park system is a bright spot (they are improved and well-maintained)
- Nice programs like laser tag and field trips
- Pool and children's theater productions
- Movies in the park

Concerns

What do you think about the distribution of parks?

- Subdivision on east side (NE corner) will need parks or a school field
- Park development in east side will be important for Chamber to promote all neighborhoods in Hermiston to prospective residents

Where do we need to focus efforts?

- Trails – expanding the system and connecting with county trails
- Keeping up programs
- YMCA/Boys & Girls Club-like facility with after school programs (School District program is expensive)
- Golf course or driving range
- Bicycling (need for safe routes or off-street paths, bike lanes)
- Paths/Trails can be for multiple users (Multi-Use Path)

What's important for economic growth?

- Parks, trails
- Sports tournaments (direct visitors to local businesses during off times/downtime in tournament)
- Dog park

City of Hermiston Parks, Recreation and Open Space (PROS) Master Plan Update Chamber of Commerce Focus Group Agenda

October 10, 2019

Opportunities

- Support for similar facility to n Boardman pool
- Indoor facility with after-school programs, weight rooms, gym area
- Day-use rentals for water sports and floating river (Umatilla River, Steelhead Property)
- Establish river access program like *Float the Boise River* in Boise, ID.

**City of Hermiston
Parks, Recreation and Open Space (PROS) Master Plan Update
Chamber of Commerce
Focus Group Agenda**

October 10, 2019

Which future improvements are most needed in Hermiston?
Multi-purpose sports fields (lacrosse, soccer, football)
Baseball fields
Softball fields
Tennis courts
Pickleball courts
Basketball courts
Spray park/splash pad
Walking/hiking trails
Water trails
Skate park
Bike park
Indoor aquatics
Indoor fitness
Golf Course
Other

Wrap-Up

Summary

Thanks, and look for the online survey on the City's website soon!

**City of Hermiston
Parks, Recreation and Open Space (PROS)
Master Plan Update**

Youth Focus Group Meeting Notes

Date: Thursday, October 10, 2019

Time: 1:00pm – 2:00pm

Location: Hermiston High School (600 S 1st Street, Hermiston, OR 97838)

Overview

- Introductions
- Goals

Favorite Park in Hermiston

- Funland – 7 votes
- Butte Park – 5 votes
- Riverfront Park – 2 votes

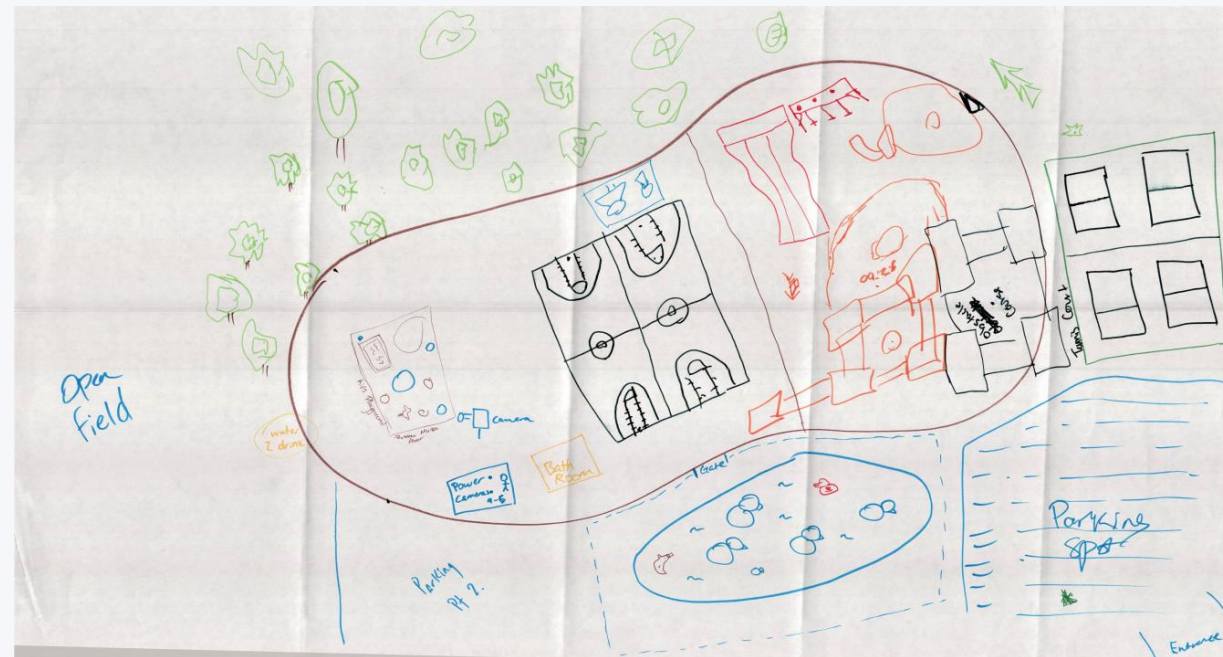
Ideal Park Design

- Group A's park design included:
 - Tennis courts
 - Obstacle course
 - Baseball/Softball field
 - Basketball courts
 - Open field area
 - Duck pond
 - Small children playground with rubber mulch floor
 - Water fountain, bathroom, fencing and gate
 - Parking lot, security cameras, trees
- Group B's park design included:
 - Snow hill (sledding)
 - Nature reserve area
 - Paths/trails
 - Gazebo
 - Fencing and gate
 - Pool
 - Indoor facility with reception, exercise room, restaurant, gym, arcade, library, theater and bathrooms
- Group C's park design included:
 - Soccer fields
 - Volleyball court
 - Skate park

City of Hermiston
Parks, Recreation and Open Space (PROS) Master Plan Update
Chamber of Commerce
Focus Group Agenda

October 10, 2019

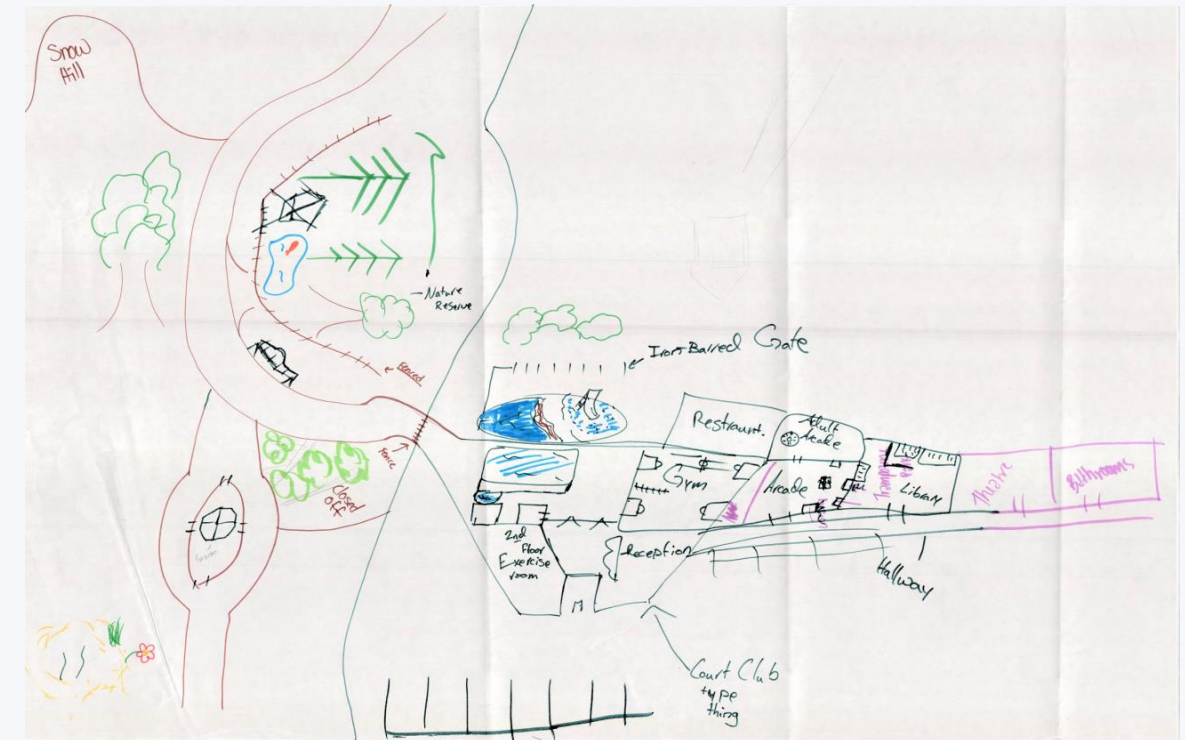
- Benches
- Duck pond
- Basketball courts
- Tennis
- Parking
- Rock wall
- Multiple Swings
- Playground with towers, bridges, climb things and tire swing
- Bike path with lighting
- Hills to roll on
- Trees for shade



Group A's park design

City of Hermiston
Parks, Recreation and Open Space (PROS) Master Plan Update
Chamber of Commerce
Focus Group Agenda

October 10, 2019



Group B's park design



Group C's park design



Stakeholder Interviews

- ▶ *SUMMARY*
- ▶ *INTERVIEW NOTES*

City of Hermiston Parks, Recreation, and Open Space (PROS) Master Plan Update

To: Larry Fetter, City of Hermiston

From: Colin McArthur, AICP
Liz Auvil,
Kelsey Zlevor

Date: February 28, 2020

Subject: **Hermiston PROS Master Plan Update
Stakeholder Interviews Summary and Notes DRAFT**

Summary

Cameron McCarthy worked with City staff to develop a list of 12 stakeholders to interview as part of the PROS master plan update. All of the stakeholders responded affirmatively to Cameron McCarthy's request for an interview. Interviews were conducted by phone and included documentation of information on the background of each stakeholder, feedback regarding current parks and recreation facilities, amenities, level of maintenance and accessibility; and, suggestions or recommendations to address future parks and recreation needs. The interviewees included representatives from the following organizations:

- AYSO (American Youth Soccer Organization)
- Hermiston Soccer League (Oregon Adult Soccer Association)
- Hermiston Youth Lacrosse Association
- Special Olympics - Hermiston, OR
- Bicycling
- Hermiston High School Swim Team
- Hermiston Little League Organization
- Youth Basketball Association (Amateur Athletic Union/AAU)
- Hermiston Adult Softball
- Good Shepherd Hospital (Community Health Educator)
- Senior Center
- Hermiston Grid Kids Football

Hermiston PROS Master Plan Update

Stakeholder Interviews Summary and Notes DRAFT

February 28, 2020

Key Themes

Needs

- Indoor aquatic facility providing year-round recreation opportunities
- Additional athletic fields to meet current and future demand
- More ADA play equipment and general accessibility improvements
- Parks and recreation facilities on the east side of Hermiston
- Additional bilingual communication about parks and recreation facilities, programs, and services

Communication

- Communication on existing media channels is great

Perspective on the Parks and Recreation Department

- Overall, positive view of parks and recreation system
- Facilities are well-maintained
- Existing parks and recreation programs are valued

Next Steps

- Seek additional land for park and recreation facility development, especially in underserved areas
- Identify potential funding sources and locations for indoor aquatic facility

Appendix A: Interview Notes

Stakeholder

Erick Juarez, AYSO, 541-701-6959. Interviewed on August 20, 2019 at 2:00 pm.

Stakeholder Background

Erick has been a commissioner with American Youth Soccer Organization for the last five years, and is the newly appointed president of Hermiston Soccer League.

Park Access

Barriers

Erick doesn't see any barriers to access. Community members can use the field anytime, for walking their dog, etc. There aren't any field hours. There is an effort to focus on youth soccer and minimize the adult soccer league use of the fields because adult soccer has heavier use on the fields, and the city wants to be able to support youth soccer.

Distribution/ Underserved Communities and/or Neighborhoods

Throughout the season people seem to know where parks are located and to be flexible with the other sports or activities happening. The community also works around the school athletics because the community relies on the school fields for some activities.

Hermiston is small and finding property is difficult. There are a lot of parks for the land available and the existing parks have been established for a long time.

Safety and Environmental Issues

There are parking lots or street parking near the parks and people can get directly from the parking area to the park. Parks also have walkways and sidewalks.

ADA/Accessibility for All Ages and Abilities

Most parks appear to be accessible.

Perceptions of Facilities and Programming

Needed facilities/programs

Hermiston needs an indoor facility. Other communities have thriving sports because they have indoor facility for sports like futsal. An indoor facility would be highly used and benefit sports like soccer, lacrosse and football. There is also a need to update the restrooms at Butte Park near Funland, but Larry is aware and working on it.

Maintenance

The parks and maintenance crew do a good job maintaining the parks. The community also volunteers. With the sports fields, the city mows the grass and we spray the grass with soccer field lines.

Allocating Funds

Funds should be allocated to increasing the number of fields and adding lighting to the sports fields. There are also field lights that need to be replaced. Fencing could be added to Butte Park as a safety measure to keep children from getting hurt in the undeveloped areas (e.g. falling on bumpy ground or coming across snakes).

Perception Parks and Recreation Department

Communication

Erick is signed up for the parks and recreation email list and receives the parks and recreation activity guide. He also notes the digital reader board outside the parks and recreation building also broadcasts messages.

Communication Improvements/Suggestions

He is not aware of the social media presence but believes they currently communicate well on social media. The combination of radio, parks and recreation activity guide, and email list are working.

Athletics

Sporting Events/Activities & Parks and Recreation Relationship

Several soccer clubs merged into one club; this helps avoid conflicts. Football and wrestling are probably the most popular sports. The only conflicts happen between the AYSO and the adult soccer league.

Sporting Facility Needs

The facilities mostly meet the AYSO needs. More fields are needed and will help the organization grow. It is difficult to develop more fields because Hermiston is small.

Additional Activity/Facility Needs

There is a good selection of activities in Hermiston. In addition to programs, there was a New Year's celebration at EOTEC last year and there are movies in the park.

Final Thoughts

A curfew at Butte Park may be helpful to discourage loitering outside park hours. Also, promoting regular police surveillance in the parks may prevent vandalism like the Funland fire.

Hermiston PROS Master Plan Update
Stakeholder Interviews Summary and Notes DRAFT

February 28, 2020

Stakeholder

Brian Maess, Hermiston Youth Lacrosse, 503-758-5470. Interviewed on November 27, 2019 at 2:00 pm.

Stakeholder Background

Brian is a board member for the Hermiston Youth Lacrosse. His son played in the Hermiston Youth Lacrosse for three years.

Park Access

Barriers

Brian isn't aware of any barriers.

Distribution/ Underserved Communities and/or Neighborhoods

The city growth has outpaced the number of parks in the system. There is a lot of demand and not enough parks. In addition, there are not many neighborhood parks of substance. There are a few small parks in neighborhoods with playground equipment, but there are no sports facilities. Sports programs, including lacrosse, usually resort to the school properties for their practices and games. Butte Park is one option for sports programs, but it is usually booked by the adult soccer league.

Safety and Environmental Issues

Brian doesn't see any safety or environmental issues in the park system.

ADA/Accessibility for All Ages and Abilities

The city parks seem to serve all ages and abilities. Butte Park is the primary park for sports activities for all ages. Lacrosse usually plays at a school site and they mostly are accessible.

Perceptions of Facilities and Programming

Needed Facilities/Programs

Sports programs do not have enough athletic fields. Brian notes there may be additional feedback relevant to the PROS plan update collected in a previous community survey unrelated to the parks plan. The survey inquired about amenities needed at EOTEC.

Maintenance

The current level of maintenance is satisfactory.

Allocating Funds

Funding priorities should primarily support developing new parks and additional fields for everyone to utilize.

Hermiston PROS Master Plan Update
Stakeholder Interviews Summary and Notes DRAFT

February 28, 2020

Perception Parks and Recreation Department

Communication

Brian relies on the email list as a primary source of communication about parks and recreation.

Communication Improvements/Suggestions

No suggestions for communication improvements.

Athletics

Sporting Events/Activities & Parks and Recreation Relationship

Every sport is redirected to use school fields because there is a shortage of athletic fields in city parks.

Sporting Facility Needs

There is a huge need for additional athletic fields in the parks. The current park system does not meet the athletics and recreation needs of the community.

Additional Activity/Facility Needs

Hermiston continues to grow a variety of athletic organizations. Many groups are competing for athletic fields. For example, there is a big push for more baseball and softball field space even though we have a dedicated baseball complex at the Field of Dreams and softball fields at Theater Sports Park. There is also a push for more soccer fields, even though soccer has a contract for use of the fields at Butte Park. There is a focus for all these sports to be accommodated, but little support to plan for other sports, such as lacrosse. At one point there was a discussion to add field space at EOTEC, but it hasn't moving forward.

Final Thoughts

Overall, Brian thinks the current parks are well-maintained. He states the city needs more athletic fields for sports activities. With a growing population, there is greater demand for additional sports. The city won't be able to meet demand without adding more parks and athletic fields.

Hermiston PROS Master Plan Update
Stakeholder Interviews Summary and Notes DRAFT

February 28, 2020

Stakeholder

Kristi Smalley, Special Olympics, 541-571-0997. Interviewed on August 20, 2019 at 3:00 pm.

Stakeholder Background

Kristi is a board member for the local Special Olympics program and the Arc of Umatilla County. She is also a coach for the Special Olympics and the mother of two children, one of whom is on the autism spectrum and experiences seizures. Kristi was also a teacher for 36 years.

Park Access

Barriers

Kristi interacts with people who experience mobility issues and there are barriers to park access. For example, Sunset Park claims it is mobility friendly, but it is not. Another barrier is the crossing near Orchard Avenue to McKenzie Park. The crossing needs a flashing light for people to safely cross the street between the parking area and the park.

Distribution/ Underserved Communities and/or Neighborhoods

Some parks have been updated, but the west side has better access to parks than the east side. In addition, Highway 395 divides the town and it is difficult for kids on the east side of town to cross Highway 395 to the parks on the west side of town.

Safety and Environmental Issues

There are safety issues related to the lack of fencing and busy streets. Sunset Park is not fenced and located on a busy street. McKenzie Park is also located on a busy street. There are a lot of kids on the autism spectrum who may run suddenly and without warning. That is a safety risk. Adding park fencing to prevent kids from running into the road or unsafe areas. An environmental issue is the lack of shade in the parks, making it challenging for people to get exercise during the day.

ADA/Accessibility for All Ages and Abilities

Mobility is only one example of inclusion. Appropriate equipment is important for accessibility. For example, some equipment is not low enough for children to access. In addition, aging equipment may not work or no longer be appropriate for accommodating all forms of mobility. Accessible swings allow children to be lifted out of their chair or away from their mobility device and directly into the swing. Accessible swings support children better than traditional ones. It is important to have several accessible activities and structures. There are a lot of play equipment options Hermiston can incorporate. Smooth surfaces are important for children to move in the park with their mobility device. Supporting parents while they supervise their children, especially a child with special needs, can include having a place for parents to sit and still be within view of the play area.

Hermiston PROS Master Plan Update
Stakeholder Interviews Summary and Notes DRAFT

February 28, 2020

Perceptions of Facilities and Programming

Needed facilities/programs

There are no public bocce courts, so the team practices on regular turf. Public courts are needed, ideally with synthetic turf grass. The park restrooms are far away from the play structures for a families with multiple children or children with special needs access. Restrooms could be closer to play areas.

Maintenance

Kristi feels the attention given to parks is impressive. She visited parks more often when her children were younger. Maintenance is above average but believes there is always room for improvement.

Allocating Funds

A third of funds should go towards maintaining existing structures or parks. Some existing maintenance may need to be deferred in order to build an indoor pool or center, but it is important not to neglect existing playgrounds and defer maintenance and upgrades long term.

Perception Parks and Recreation Department

Communication

The newspaper is a primary source of information for Kristi.

Communication Improvements/Suggestions

A friend of Kristi's has a daughter on the autism spectrum with a seizure disorder. The little girl also loves to go to the pool. However, park staff need more training about how to interact and support people on the autism spectrum. Parents of children with a disability would feel more comfortable participating in parks and rec programs if staff had more training.

Final Thoughts

If the city ever needs additional feedback on mobility issues, Amy Moon has a preschool program called Little Steps. She also has a son with mobility issues. She works with the public library and was a teacher.

Hermiston PROS Master Plan Update
Stakeholder Interviews Summary and Notes DRAFT

February 28, 2020

Stakeholder

Juan Duarte, Oregon Adult Soccer Association, (541) 701-8485. Interviewed on August 21, 2019 at 11:00 am.

Stakeholder Background

Juan previously coached youth soccer, and currently plays adult soccer and coordinates soccer matches.

Park Access

Barriers

We don't have any soccer fields available; we must share with other sports and use school fields.

Distribution/ Underserved Communities and/or Neighborhoods

The number and location of current parks do not meet community needs but it is difficult to know which communities are underserved the most.

Safety and Environmental Issues

Juan is not aware of safety issues related to park access.

ADA/Accessibility for All Ages and Abilities

No issues with park accessibility.

Perceptions of Facilities and Programming

Needed Facilities/Programs

The community needs soccer fields and a sports complex.

Maintenance

The level of maintenance is pretty good.

Allocating Funds

Everything is ok right now, but the priority is a new field.

Perception Parks and Recreation Department

Communication

Juan relies on email or social media for information.

Communication Improvements/Suggestions

No improvements suggested.

Hermiston PROS Master Plan Update
Stakeholder Interviews Summary and Notes DRAFT

February 28, 2020

Athletics

Sporting Events/Activities & Parks and Recreation Relationship

There are a lot of basketball activities, and they must use the school facilities. There are not a lot of other sports events or tournaments here. We don't have large enough facilities.

Sporting Facility Needs

The main needs are the soccer and lacrosse fields.

Additional Activity/Facility Needs

No additional comment.

Final Thoughts

No additional comment.

**Hermiston PROS Master Plan Update
Stakeholder Interviews Summary and Notes DRAFT**

February 28, 2020

Stakeholder

Nate Rivera, Bicycling, Interview on August 22, 2019 2:00 pm.

Stakeholder Background

Nate is the general manager of the local electrical utility. He also served as the general manager of EOTEC, and previously was an account manager where he handled community development for an electrical co-op.

Park Access

Barriers

Current barriers include a lack of facilities for community needs. Adequate lighting and ADA access have been issues for a while. There are also parking related issues at some of the parks. Aging infrastructure is also a barrier.

Distribution/ Underserved Communities and/or Neighborhoods

Nate thinks there is a heavier congregation of parks in the existing city, but as they city has grown there hasn't been park development in new neighborhoods, such as the NE corner or SE corner of the city. The NE and NW areas of the city are closer to the Butte facility but the area north of Butte Park is park deprived.

Safety and Environmental Issues

Some parks do have flooding, which limits park access for part of the year.

ADA/Accessibility for All Ages and Abilities

No comment.

Perceptions of Facilities and Programming

Needed Facilities/Programs

Nate thinks the city is working towards improving facilities with ADA and access issues. Some materials in our parks (such as bark) make it difficult for people with wheelchairs or devices to move around. In addition, our parks should be more accessible for the elderly.

Sporting Facility Needs

More paved trails to access different portions of the parks. Tying the parks together with a trails system (we've started that process) and connecting the parks has a lot of value. There has been interest in having pickleball and year-round swimming. Nate is an active swimmer and more than six months of the year he travels 35 miles to the nearest pool. Shared sports space is also a need—there is limited space for youth soccer and youth lacrosse. If someone is not with a formal sport organization, there is limited space to use during their practice times. There are no dog parks, covered areas, picnic areas and water stations at the parks either. There is one multi-sport complex for softball and baseball, and it seems limited for a community of our size.

**Hermiston PROS Master Plan Update
Stakeholder Interviews Summary and Notes DRAFT**

February 28, 2020

Maintenance

The city does a fairly good job on maintenance with the resources they have.

Allocating Funds

A health and wellness facility for our community is a huge need. There is a year-round need for access to fitness opportunities (both indoor and outdoor spaces). The elderly and disabled also need space to have fitness opportunities. Prioritizing park acquisitions in currently underserved areas is important right now too.

Perception Parks and Recreation Department

Communication

Nate is aware of the parks and recreation activity guide, and social media platforms like Facebook. Also, he uses the city's website as a resource.

Communication Improvements/Suggestions

No additional comment.

Athletics

Sporting Events/Activities & Parks and Recreation Relationship

The overlapping of activities causes stress. If there's a soccer tournament or birthday party, it's difficult to have space for families and groups to use recreation space and not conflict with organized sports/youth sports programs.

Sporting Facility Needs

The current facilities lack ADA facilities. There is also a lack of walking areas and trails. Expanding opportunities for running, biking and swimming is a need.

Additional Activity/Facility Needs

Pickleball would be a community benefit, and additional trail opportunities. Improving existing parks may offer opportunities for seniors to move around better in the park spaces. For example, it's difficult for seniors to access the green space when it's muddy or there are no smooth surfaces (only grass). Also, lighting is needed because it is a safety issues and the window to use park spaces is limited to daylight hours.

Final Thoughts

This planning process is a good step for the city, and it is a big priority for city council to identify funding opportunities and next steps after the plan is complete.

Hermiston PROS Master Plan Update
Stakeholder Interviews Summary and Notes DRAFT

February 28, 2020

Stakeholder

Kerri Hodges, Swimming, (541) 571-5396. Interviewed on August 8, 2019 at 1:30 pm.

Stakeholder Background

Kerri coaches youth swimming in the summer. She previously coached the swim team at the high school. She currently works in special education at an elementary school.

Park Access

Barriers

Individuals with wheelchairs have a lot of problems accessing parks or fields from parking lots. There could be improved sidewalks. Kerri would love to see a wheelchair swing at the next park they build and no bark (or inaccessible) areas in the playground or park.

Distribution/ Underserved Communities and/or Neighborhoods

There are a lot of parks around town and there seem to be parks near most residential areas. The only underserved one is the Larive neighborhood, but the kids use the school playgrounds to play.

Safety and Environmental Issues

I haven't noticed any safety issues. The walking trails are fantastic.

ADA/Accessibility for All Ages and Abilities

Most of our senior citizens use the walking park or they go to movies/music in the park.

Perceptions of facilities and programming

Needed facilities/programs

Handicap swing for wheelchair users is needed as well as an indoor swimming/activity center. Currently, there are no indoor basketball courts for youth.

Maintenance:

Kerri regularly see people picking up garbage and fixing restrooms and is satisfied with maintenance of parks.

Allocating Funds

Kerri does not live in the city limits, so she does not vote on parks bonds and feels it is difficult be specific about funding. There are a huge number of families in the area that use Hermiston parks but don't vote on parks bonds.

Hermiston PROS Master Plan Update
Stakeholder Interviews Summary and Notes DRAFT

February 28, 2020

Perception Parks and Recreation Department

Communication

Kerri uses social media and the email list for updates on activities.

Communication Improvements/Suggestions

Kerri feels there is good communication. She does mention if individuals do not have access to a computer then communication may be more difficult. However, the City's makes a parks and recreation activity guide, they do a good job communicating with every social/economic level between the emails and the info booklet.

Athletics

Sporting Events/Activities & Parks and Recreation Relationship

There are youth sports in pretty much every activity. Youth sports use city parks and school facilities. Kerri mentions if swim team participation increases, Hermiston could host swim meets and that could be an economic boost to the city.

Sporting Facility Needs

Kerri reiterates the need for the indoor pool and indoor basketball courts. Many sports and the special Olympics use the school district facilities. The most underserved sport is the swim team—they can't be a year-round sport because they don't have an indoor facility.

Additional Activity/Facility Needs

If there was an indoor pool, Hermiston could have a diving team and a water polo team.

Final Thoughts

No additional comment.

**Hermiston PROS Master Plan Update
Stakeholder Interviews Summary and Notes DRAFT**

February 28, 2020

Stakeholder

Rich Devin, Little League, 541-980-7642. Interviewed on August 29, 2019.

Stakeholder Background

Rich is president of Hermiston Little League.

Park Access

Barriers

No comment.

Distribution/ Underserved Communities and/or Neighborhoods

Beautiful parks. The parks department does a great job. Kids love Butte Park.

Safety and Environmental Issues

No comment.

ADA/Accessibility for All Ages and Abilities

No comment.

Perceptions of Facilities and Programming

Needed Facilities/Programs

Little league have their own athletic fields, but they need more practice fields. There are a lot of activities for little kids but junior high kids need more activities. Lacrosse needs fields too.

Maintenance

The city does a great job with parks maintenance.

Allocating Funds

New sports complex and indoor facility for swimming is the highest priority. Surrounding cities (Walla Walla, Kennewick, etc.) have great sports complexes where 20 teams can come and stay the night and shop.

Perception Parks and Recreation Department

Communication

Rich relies on Facebook and the email list. The City of Hermiston website also has parks and recreation updates. In addition to city communication, little league sends fliers to schools in English and Spanish.

Communication Improvements/Suggestions

No comment.

**Hermiston PROS Master Plan Update
Stakeholder Interviews Summary and Notes DRAFT**

February 28, 2020

Final Thoughts

No additional comment.

Hermiston PROS Master Plan Update
Stakeholder Interviews Summary and Notes DRAFT

February 28, 2020

Stakeholder

Brian Moss, AAU Basketball, 541-667-7416. Interviewed on August 20, 2019 1:00 PM.

Stakeholder Background

Brian is currently president of basketball club in Hermiston and uses athletic facilities for softball and baseball.

Park Access

Barriers

No comment.

Distribution/ Underserved Communities and/or Neighborhoods

We don't have enough of the parks to serve all the youth programs, but I don't know if there are specific underserved neighborhoods.

Safety and Environmental Issues

The parks are accessible.

ADA/Accessibility for All Ages and Abilities

No comment.

Perceptions of facilities and programming

Needed facilities/programs

I think a very nice recreation facility with indoor pool, courts, track and other recreation activities would be great.

Maintenance

Hermiston does a pretty good job with maintenance of existing parks.

Allocating Funds

New facilities.

Perception Parks and Recreation Department

Communication

The social media posts and the East Oregonian keep people informed.

Communication Improvements/Suggestions

No, I think they do a good job right now.

Hermiston PROS Master Plan Update
Stakeholder Interviews Summary and Notes DRAFT

February 28, 2020

Athletics

Sporting Events/Activities & Parks and Recreation Relationship

There are four basketball tournaments with 100 or more teams for each tournament. We currently use the school gyms (previously used athletic club before it burnt down). Additional indoor courts would help support tournaments.

Sporting Facility Needs

The basketball club has outgrown the school gyms and must go to Umatilla and Stanford.

Additional Activity/Facility Needs

No comment.

Final Thoughts

There is major growth in Hermiston, and it creates a need for more facilities.

Hermiston PROS Master Plan Update
Stakeholder Interviews Summary and Notes DRAFT

February 28, 2020

Stakeholder

Jim Whalley, Adult Softball, 541-561-5736. Interviewed on August 22, 2019 at 11:30 am.

Stakeholder Background

Jim has been on parks and recreation committee and several task forces for livability. He also participates in several adult city league sports and runs two charity softball tournaments.

Park Access

Barriers

Jim isn't aware of any barriers.

Distribution/Underserved Communities and/or Neighborhoods

Jim notes the current park locations work, but the facilities are an issue. Specifically, the softball fields are not well-maintained and there aren't lights on every field making it difficult to run a tournament in town. Surrounding towns have sports complexes with 4-5 fields making it easier to host tournaments.

Underserved neighborhoods include potentially at the north end of town.

No comment.

Safety and Environmental Issues

I'm not aware of any issues.

ADA/Accessibility for All Ages and Abilities

The softball fields could be better. Some softball facilities allow adult and youth sports. Two fields are mostly for adults, and there could be more youth sport friendly facilities.

Perceptions of Facilities and Programming

Needed Facilities/Programs

There's an opportunity to have a nice facility and bring tournaments for youth sports that aren't currently in this area specifically ASA (softball). Some alterations to the fields include standardizing distances on the bases, pitchers' mound and outfield, and adding lighting.

Maintenance

The field maintenance is lacking sometimes.

Allocating Funds

Building a new facility that is user friendly to everyone is a funding priority. This facility may include additional field or two with lighting.

Hermiston PROS Master Plan Update
Stakeholder Interviews Summary and Notes DRAFT

February 28, 2020

Perception Parks and Recreation Department

Communication

Jim reads the monthly email newsletter and sees social media posts.

Communication Improvements/Suggestions

No suggestions.

Athletics

Sporting Events/Activities & Parks and Recreation Relationship

There are some conflicts with field use. They use softball fields for youth football. Jim has attempted to host softball tournaments and the fields are already occupied by youth flag football.

Sporting Facility Needs

Previously mentioned facilities and/or updates are needed in the park system.

Additional Activity/Facility Needs

Improved softball complex.

Final Thoughts

Jim did not have additional comments except for noting Ryan Murray is another resource for softball and lacrosse information.

Hermiston PROS Master Plan Update
Stakeholder Interviews Summary and Notes DRAFT

February 28, 2020

Stakeholder

Jaime Crowell, Wellness Walking, 541-667-3502. Interviewed on August 20, 2019 11:00 am.

Stakeholder Background

Jaime is a community health educator at Good Shepherd. She is responsible for looking at health data and developing strategies to act on data showing rates of chronic disease and obesity. One strategy is a program utilizing exercise prescriptions (e.g. Northeast Oregon Prescription Trails) The program has a website for parks and trails for people to use when they receive an exercise prescription. The website (www.walkrxtrails.com) was built on volunteer field data.

Park Access

Barriers

Main barrier is the weather hindering access to year-round exercise due to heat in the summer and ice/snow in the winter. A community center would be able to provide year-round exercise opportunities. Current parks also close at dusk and since the parks do not have lighting this limits park access especially in the winter. People outside of the city limits have issues with park access related to lack of transportation.

Distribution/Underserved Communities and/or Neighborhoods

The parks on the website seem to be distributed but the rural areas don't have parks, so they are underserved.

Safety and Environmental Issues

The smoke and environmental pollution (e.g. wildfire smoke and/or crop burning) causes pollution.

ADA/Accessibility for All Ages and Abilities

Most parks are paved reducing barriers for mobility issues and families with young children in strollers.

Perceptions of facilities and programming

Needed facilities/programs

There are no walking clubs or activities that are free. Another needed program is yoga in the park. These programs would be helpful.

Maintenance

I live in Umatilla and the only park I frequent is a federally owned park. Hermiston parks seem well maintained.

Hermiston PROS Master Plan Update
Stakeholder Interviews Summary and Notes DRAFT

February 28, 2020

Allocating Funds

The greatest need is free indoor recreation areas when weather is poor outside and/or there are environmental pollutants.

Perception Parks and Recreation Department

Communication

Jaime notes there is a parks and recreation activity guide, and there is a health brochure at the hospital. Jaime assumes there is probably information on social media, but she doesn't utilize it.

Communication Improvements/Suggestions

Continuing to use social media is a great platform. The local newspaper is also a good way to reach community.

Final Thoughts

No additional comment.

**Hermiston PROS Master Plan Update
Stakeholder Interviews Summary and Notes DRAFT**

February 28, 2020

Stakeholder

Willard Fordice, Seniors, 541-571-7134. Interviewed on August 22, 2019 3:00 pm.

Stakeholder Background

Willard is the Director of the Hermiston Harkenrider Senior Center. Seniors do not use the parks very much. Willard has visited a few parks. He thinks the parks are great; the parks are green and all ages appear to use them.

Park Access

Barriers

Anyone in a wheelchair is limited because of the soft surfaces. If there are no sidewalks or hard surfaces anyone with a cane or walker cannot move around the space. Also, bus stops are far apart, so it is difficult for seniors to walk to a bus stop to get a ride to a park. The bus stops aren't well-located either.

Distribution/ Underserved Communities and/or Neighborhoods

The parks are well-located. There are many parks on the west side of town, including Butte Park. There are some senior living facilities near a couple parks, too. There's one new park they put in around the northwest area of Hermiston. Not many people live in that area, but it is still great to have that park. There's another one on 4th street near Elm Street.

Willard does not think there are underserved neighborhoods.

Safety and Environmental Issues

It is a challenge to provide access to people who live in rural areas that are far away from parks. People use Riverfront Park constantly. People like to walk on the trail.

ADA/Accessibility for All Ages and Abilities

The parks seem well equipped. They have restrooms and some parks are accessible to seniors. For example, Riverfront Park is great for accessible for wheelchair users or seniors.

Perceptions of facilities and programming

Needed facilities/programs

When it is warm outside, it would be great to see music and movies in the park.

Maintenance

The city does a wonderful job keeping the grass mowed and well maintained. The shelters have benches to sit on and the parks are well cleaned--they look nice.

**Hermiston PROS Master Plan Update
Stakeholder Interviews Summary and Notes DRAFT**

February 28, 2020

Allocating Funds

Willard hopes to see new facilities throughout the area. It would be great to get state, county and/or federal funding so the burden of funding isn't all on local Hermiston residents.

Perception Parks and Recreation Department

Communication

The parks and recreation publishes a parks and recreation activity guide and there is also a website. Radio, newspaper and Facebook are used for announcements and advertisements.

Communication Improvements/Suggestions

The communication is pretty good. The activity guide describes the programs, and they publish it every three months or so. The booklets are well-distributed around town.

Seniors

Willard thinks the city advocates for seniors all the time. Larry works closely with the seniors and he has been a big help to seniors.

Senior Needs

The senior center is a good place to share information. People regularly come during lunch to share information.

Senior Accessibility

No comment.

Senior Communication Suggestions

Willard does not have additional suggestions to improve communication with seniors.

Final Thoughts

No comment.

Hermiston PROS Master Plan Update
Stakeholder Interviews Summary and Notes DRAFT

February 28, 2020

Stakeholder

Joe Gutierrez, Grid Kids Football, (541) 314-5399. Interviewed on August 22, 2019 1:00 pm.

Stakeholder Background

Joe has been involved with the football program for 22 years and he has led the program for 8 years. There are about 220 kids per year and 10 teams per year (5 teams for 3-4 grade and 5 teams for 5-6 grade). He finds fields are difficult to access for football practices.

Park Access

Barriers

No, I don't see any barriers. However, there is not enough space to hold functions/events.

Distribution/ Underserved Communities and/or Neighborhoods

For the most part the parks are well-distributed. Often there is an issue with a lack of space to accommodate all the events that are happening. More park space would be better for everyone. The city itself is growing and that brings in more people using the parks. The program is expanding and wants to include everyone. The limitations of park space are a challenge. The schools help by letting us use their playgrounds or fields.

If children are too young to walk on busy roads (such as Highland), it may be difficult to access parks.

Safety and Environmental Issues

Busy roads are difficult to cross. Parks flood when water is high, and it makes it unusable for a while.

ADA/Accessibility for All Ages and Abilities

The kids interested in going to parks seem to be served well.

Perceptions of facilities and programming

Needed facilities/programs

Lighting would be helpful when it gets dark and activities are happening.

Maintenance

Maintenance for the most part is good around here. The parks are clean and people pick up after themselves or others.

Allocating Funds

One or two fields for practice facilities will help the communities. Football and soccer share a lot of facilities. If the programs use a school facility, it's only allowed after hours so restrooms

Hermiston PROS Master Plan Update
Stakeholder Interviews Summary and Notes DRAFT

February 28, 2020

aren't available to kids participating in sports and they must go over to a store, etc. More athletic fields with restrooms will be helpful.

Perception Parks and Recreation Department

Communication

Sports programs and the city use a lot of social media.

Communication Improvements/Suggestions

Promoting events through the schools more by sending home information with students for their parents.

Athletics

Sporting Events/Activities & Parks and Recreation Relationship

During youth football and youth soccer season the programs try to share the available facilities. Even though the teams try to practice on different days or adjust practice times conflicts seem inevitable because there are so many students (probably 500 or more). The same thing happens with soccer and lacrosse in the spring. There is a demand for more fields.

Sporting Facility Needs

The conflicts between multiple sports using fields throughout the year needs to be resolved.

Additional Activity/Facility Needs

Designated turf field or area for the sports is needed in order to have amenities like restrooms and concessions. Hopefully, this could support tournaments and bring more revenue into the city.

Final Thoughts

Joe mentioned Kelly Allen is also involved with lacrosse (541-314-5607) and can be a source of information.

Parks and recreation in Hermiston are good, and the school district has been accommodating for our programs but having more park facilities to support everyone would be helpful.



Pop Up Events

- ▶ *SPUDFEST NOTES*
- ▶ *UMATILLA COUNTY FAIR NOTES*
- ▶ *TRAIL BLAZER'S RIP CITY RALLY NOTES*

City of Hermiston Parks, Recreation and Open Space (PROS) Plan Update

To: Larry Fetter, Parks and Recreation Director
City of Hermiston

From: Colin McArthur
Liz Auvil
Kelsey Zlevor

Date: July 16, 2019

Subject: **Community Outreach Event
Spud Fest Event Notes**

PURPOSE

This memo summarizes key takeaways and notes from a community outreach event that took place on Saturday July 13, 2019 at Spud Fest in downtown Hermiston. Cameron McCarthy set up a booth at Spud Fest with an existing system map, three image boards, comment cards and a photobooth. All materials were labeled in English and Spanish. The public could share their input in the following ways:

- Image Boards: vote for park activities/programs they want in Hermiston parks with green dots; vote for parks activities/programs they don't want in Hermiston parks with red dots.
- Comment Cards: provide written comments or visual sketches of additional ideas on comment cards
- Photobooth: fill in the speech bubble with an answer to the prompt, "My ideal park system would have..."

Spud Fest attracted many individuals representing a diverse age group, as well as families.

Key Takeaways

- Desire for indoor pool
- Desire for river trails
- Desire for public art
- Also supported were rock climbing features, a dog park, and covered play areas

NOTES FROM EVENT

General Comments

- "Track" was written on a comment card to reflect interest in youth-oriented track and field

City of Hermiston

Parks, Recreation and Open Space (PROS) Plan Update

July 16, 2019

- facilities and programs
 - Verbal comment included request for longer program hours at the pool

IMAGE BOARD VOTING EXERCISE RESULTS

Amenity	Votes In Favor	Votes Against	Total Votes	% in Favor	% Against
Indoor pool	33	0	33	100%	0%
River trails	16	0	16	100%	0%
Public art	14	0	14	100%	0%
Covered play areas	12	0	12	100%	0%
Dog park	12	0	12	100%	0%
Rock climbing features	12	1	13	92%	8%
Spray pad	11	0	11	100%	0%
Nature play playgrounds	10	0	10	100%	0%
Trails	10	0	10	100%	0%
Performance spaces	9	0	9	100%	0%
Outdoor fitness station	9	1	10	90%	10%
Picnic shelter	8	0	8	100%	0%
Walking/running path	8	1	9	89%	11%
Soccer fields	7	1	8	88%	13%
Outdoor cooking facility	6	0	6	100%	0%
Bicycle pump tracks	6	1	7	86%	14%
Sand volleyball courts	6	1	7	86%	14%
Natural areas	5	0	5	100%	0%
Community gardens	5	1	6	83%	17%
Basketball courts	4	0	4	100%	0%
Playground equipment	4	0	4	100%	0%
Baseball fields	4	1	5	80%	20%
Exercise equipment	4	1	5	80%	20%
Disc golf	4	1	5	80%	20%
Softball fields	4	2	6	67%	33%
Skate parks	4	4	8	50%	50%
Lacrosse	3	1	4	75%	25%
Pickleball	3	1	4	75%	25%
Football fields	3	4	7	43%	57%
Tennis courts	2	2	4	50%	50%
Golf	1	4	5	20%	80%

City of Hermiston
Parks, Recreation and Open Space (PROS) Plan Update

July 16, 2019

PHOTOS



City of Hermiston
Parks, Recreation and Open Space (PROS) Plan Update

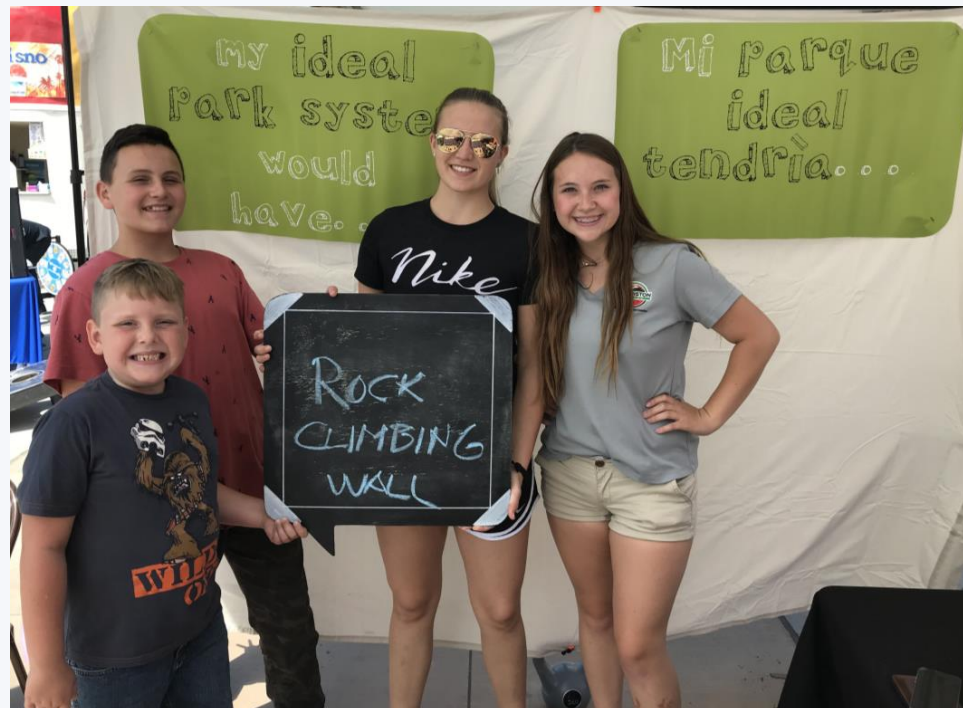
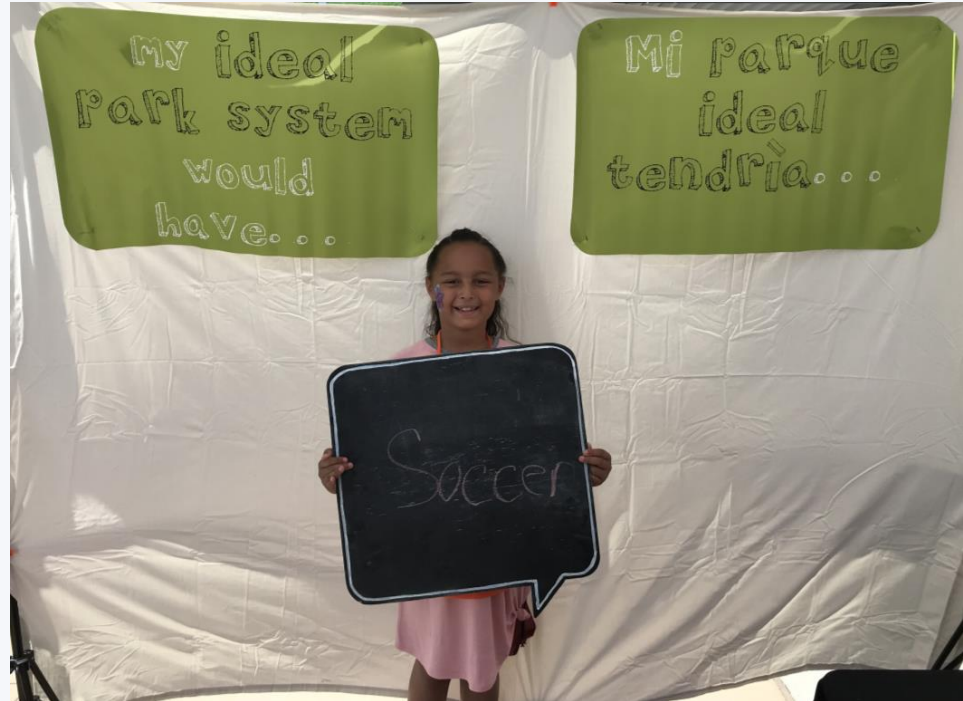
July 16, 2019



Hermiston Parks & Recreation booth at Spud Fest on July 13, 2019.

City of Hermiston
Parks, Recreation and Open Space (PROS) Plan Update

July 16, 2019



Youth participants provided input at the photobooth during Spud Fest.

City of Hermiston Parks, Recreation and Open Space (PROS) Plan Update

To: Larry Fetter, Parks and Recreation Director
City of Hermiston

From: Colin McArthur
Liz Auvil
Kelsey Zlevor

Date: August 13, 2019

Subject: **Community Outreach Event**
Umatilla County Fair Notes

PURPOSE

This memo summarizes key takeaways and notes from a community outreach event that took place on Friday August 9th and Saturday August 10th at the Umatilla County Fair at EOTEC in Hermiston. Cameron McCarthy set up a booth at the County Fair with four image boards and comment cards. All materials were labeled in English and Spanish. The public could share their input in the following ways:

- Image Boards: vote for park activities/programs they want in Hermiston parks with green dots; vote for parks activities/programs they don't want in Hermiston parks with red dots.
- Comment Cards: provide written comments or visual sketches of additional ideas on comment cards.

The Umatilla County Fair attracted many individuals representing a diverse age group, as well as families.

Key Takeaways

- Desire for indoor pool
- Desire for water slide
- Desire for river trails
- Desire for dog park
- Also highly supported were bicycle pump track, wading pool, rock climbing feature, hot tub, open swim, spray pad, trails, and playground equipment.

NOTES FROM EVENT

General Comments

- Old irrigation canals turned into lazy river. *Idea for river trails*

**City of Hermiston
Parks, Recreation and Open Space (PROS) Plan Update**

August 13, 2019

- Goalball for the visually impaired
- Wheelchair swings
- YMCA-type rec center (like Boardman). *Requested by 4 people*
- Indoor basketball courts
- ADA/handicap accessible playgrounds
- Water fountains. *Requested by 2 people*
- Wave pool
- Bring “Cabin Fever” production back at community center
- Neighborhood watch or church volunteer group to monitor parks (drug dealers in parks)
- Sports for visually impaired. *Requested by 2 people*
- Reasonable prices for open swim at pool
- Shade near pool
- Tree house and slide

IMAGE BOARD VOTING EXERCISE RESULTS

Amenity	Votes in Favor	Votes Against	Total Votes	% in Favor	% Against
Indoor Pool	65	1	66	98%	2%
Water Slide	44	0	44	100%	0%
River Trails	36	0	36	100%	0%
Dog Park	35	0	35	100%	0%
Bicycle Pump Track	27	0	27	100%	0%
Wading Pool	24	0	24	100%	0%
Rock Climbing Feature	19	0	19	100%	0%
Hot Tub	19	0	19	100%	0%
Open Swim	19	0	19	100%	0%
Spray Pad	18	0	18	100%	0%
Trails	17	0	17	100%	0%
Playground Equipment	15	0	15	100%	0%
Public Art	14	0	14	100%	0%
Golf	13	0	13	100%	0%
Covered Play Area	13	0	13	100%	0%
Natural Areas	13	0	13	100%	0%
Walking/Running Path	13	0	13	100%	0%
Exercise Equipment	13	0	13	100%	0%
Lap Swimming	13	0	13	100%	0%
Pool Fitness	13	0	13	100%	0%
Diving Board	13	0	13	100%	0%
Skate Park	12	0	12	100%	0%
Performance Space	12	0	12	100%	0%
Sand Volleyball Court	12	1	13	92%	8%
Disc Golf	11	0	11	100%	0%
Nature Play	11	1	12	92%	8%

**City of Hermiston
Parks, Recreation and Open Space (PROS) Plan Update**

August 13, 2019

Family Changing Rooms	11	0	11	100%	0%
Diving Blocks	10	0	10	100%	0%
Baseball Field	9	0	9	100%	0%
Football Field	9	0	9	100%	0%
Soccer Field	9	0	9	100%	0%
Community Garden	9	0	9	100%	0%
Basketball Courts	8	0	8	100%	0%
Picnic Shelter	8	0	8	100%	0%
Pickleball Court	7	0	7	100%	0%
Picnic Tables	7	0	7	100%	0%
Tennis Courts	6	0	6	100%	0%
Outdoor Fitness Station	6	1	7	86%	14%
Lacrosse	5	0	5	100%	0%
Softball Field	5	3	8	63%	38%
Outdoor Cooking Facility	2	0	2	100%	0%
Lobby	2	0	2	100%	0%
Locker Room	2	0	2	100%	0%



Hermiston Parks & Recreation booth at Umatilla County Fair on August 9, 2019. The community participated in feedback exercise by placing green dots next to images representative of park improvements they want to see in Hermiston.



The community also had the opportunity to place red dots on images of park improvements they did not want, but their feedback was overwhelmingly positive and focused on desired park improvements.

City of Hermiston Parks, Recreation and Open Space (PROS) Plan Update

To: Larry Fetter, Parks and Recreation Director
City of Hermiston

From: Colin McArthur
Liz Auvil
Kelsey Zlevor

Date: September 16, 2019

Subject: **Community Outreach Event
Blazer Event Notes**

PURPOSE

This memo summarizes key takeaways and notes from a community outreach event that took place on Wednesday, September 11, at the Community Center in Hermiston. Cameron McCarthy set up a booth at the Blazer event with four image boards and comment cards. All materials were labeled in English and Spanish. The public had opportunities to share input in the following ways:

- Image Boards: vote for park activities/programs they want in Hermiston parks with green dots; vote for parks activities/programs they don't want in Hermiston parks with red dots.
- Comment Cards: provide written comments or visual sketches of additional ideas on comment cards.

The Blazer event attracted primarily families with young children and teens.

Key Takeaways

- Desire for indoor pool
- Desire for supporting aquatics amenities (water slide, wading pool, swimming lessons and open swim)
- Desire for gymnasiums as well as basketball courts
- Rock climbing feature
- Public art
- Spray pad
- Skate park

General Comments

- Warm pool for therapy
- Indoor water pool for 50-meter swimming meets

City of Hermiston Parks, Recreation and Open Space (PROS) Plan Update

September 16, 2019

- Community and aquatic center
- Water recreation classes for heavier adults (> 200lbs)

Image Board Voting Exercise Results

Amenity	Votes In Favor	Votes Against	Total Votes	% in Favor	% Against
Indoor pool	45	0	45	100%	0%
Water slide	31	0	31	100%	0%
Wading pool	30	0	30	100%	0%
Gymnasiums	23	5	28	82%	18%
Rock climbing features	22	1	23	96%	4%
Basketball courts	22	1	23	96%	4%
Open swim	22	0	22	100%	0%
Public art	19	3	22	86%	14%
Spray pad	19	3	22	86%	14%
Skate parks	19	1	20	95%	5%
Swimming lessons	19	0	19	100%	0%
Diving board	18	0	18	100%	0%
River trails	16	0	16	100%	0%
Family changing rooms	16	0	16	100%	0%
Dog park	15	2	17	88%	12%
Nature play playgrounds	15	0	15	100%	0%
Walking/running path	15	0	15	100%	0%
Soccer fields	15	4	19	79%	21%
Bicycle pump tracks	15	0	15	100%	0%
Hot tub	15	0	15	100%	0%
Covered play areas	14	0	14	100%	0%
Playground equipment	14	0	14	100%	0%
Exercise equipment	14	0	14	100%	0%
Football fields	14	0	14	100%	0%
Restrooms	14	1	15	93%	7%
Furniture (tables, benches, drinking fountains, garbage cans)	14	0	14	100%	0%
Outdoor cooking facility	13	0	13	100%	0%
Sand volleyball courts	13	2	15	87%	13%
Natural areas	13	3	16	81%	19%
Performance spaces	12	3	15	80%	20%
Outdoor fitness station	12	1	13	92%	8%

City of Hermiston
Parks, Recreation and Open Space (PROS) Plan Update

September 16, 2019

Amenity	Votes In Favor	Votes Against	Total Votes	% in Favor	% Against
Picnic shelter	12	0	12	100%	0%
Competitive swimming	11	1	12	92%	8%
Baseball fields	10	1	11	91%	9%
Lap swimming	10	0	10	100%	0%
Pool fitness	10	0	10	100%	0%
Trails	9	2	11	82%	18%
Softball fields	9	4	13	69%	31%
Strength conditioning	9	0	9	100%	0%
Warm water therapy	8	1	9	89%	11%
Racquetball	8	3	11	73%	27%
Lacrosse	7	1	8	88%	13%
Locker room	7	1	8	88%	13%
Community gardens	6	3	9	67%	33%
Pickleball	5	1	6	83%	17%
Lobby	5	1	6	83%	17%
Disc golf	4	9	13	31%	69%
Golf	4	4	8	50%	50%
Tennis courts	3	3	6	50%	50%
Aerobics	3	0	3	100%	0%

City of Hermiston
Parks, Recreation and Open Space (PROS) Plan Update

September 16, 2019

PHOTOS



Hermiston Parks & Recreation booth at the Blazer event on September 11, 2019. The community participated in an exercise by placing green dots next to images representative of park improvements they want to see in Hermiston and red dots on images of park improvements they do not want to see. Participants also had an opportunity to write additional comments on comment cards.





H

Wayfinding Signage System

- ▶ *STAFF REPORT*
- ▶ *WAYFINDING SIGNAGE OPTIONS*



STAFF REPORT
For Meeting of June 22, 2020
MAYOR AND MEMBERS OF THE CITY COUNCIL

Agenda Item # 6.A.

TITLE: Wayfinding Sign Presentation

Subject

Glen Swantak, the urban renewal district's wayfinding sign consultant will present two alternatives on sign design.

Summary and Background

In 2019, the city and urban renewal agency entered into a contract with Merje Environments and Experiences of West Chester, PA to provide design services for wayfinding signage design and planning. After a series of meetings with the project steering committee and stakeholder groups, a preliminary set of design alternatives was prepared. The steering committee has narrowed down the design alternatives to two recommended designs. The team is asking the city council to provide feedback and direction on the final two alternatives and help narrow the design to one preferred alternative.

Glen Swantak from Merje will join the meeting via teleconference to discuss the process and designs with the city council.

Tie-In to Council Goals:

Wayfinding signage is an urban renewal priority for 2019 and 2020.

Fiscal Information

Construction of signage has a budget line item of \$48,500 in the 2020-21 urban renewal agency budget.

Alternatives and Recommendation

Alternatives

Recommendation

Requested Action/Motion

Staff requests that the council express a preference for option 4a or 4b of the signage alternatives.

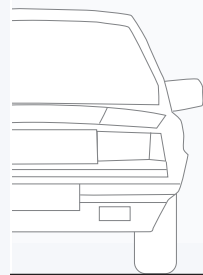
Submitted By: Clinton Spencer

ATTACHMENTS:

Description	Type
Wayfinding Signage Options	Exhibit



13'-6"
12'-0"
10'-6"
9'-0"
7'-6"
6'-0"



SCALE: 3/4" = 1'-0"



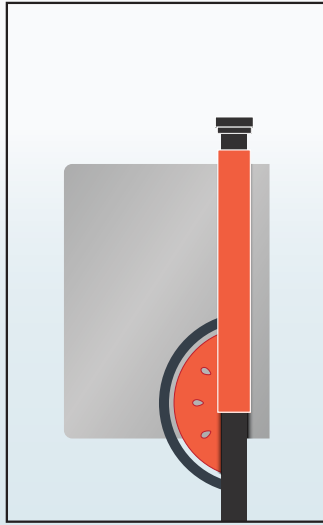
City Gateway
Option A



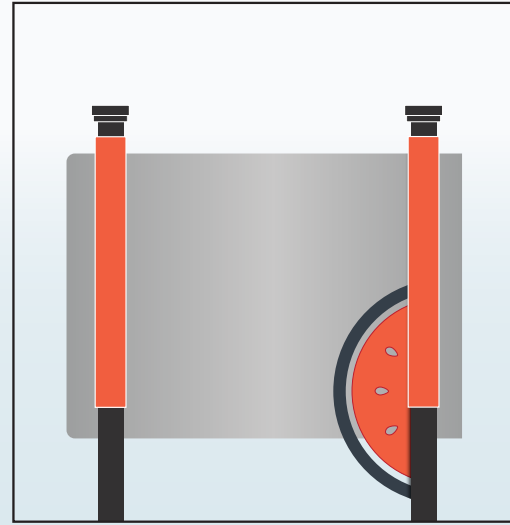
City Gateway
Option B



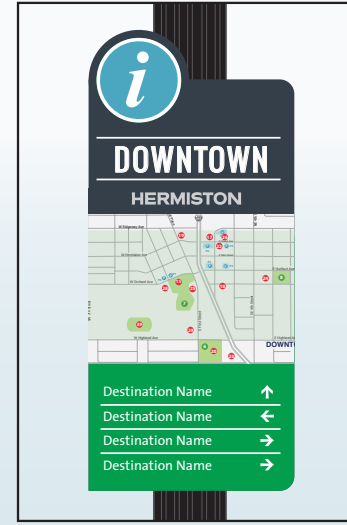
City Gateway
Option C



Back View



Back View



13'-6"

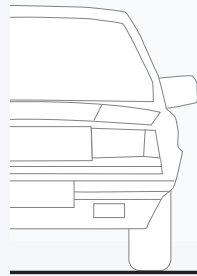
12'-0"

10'-6"

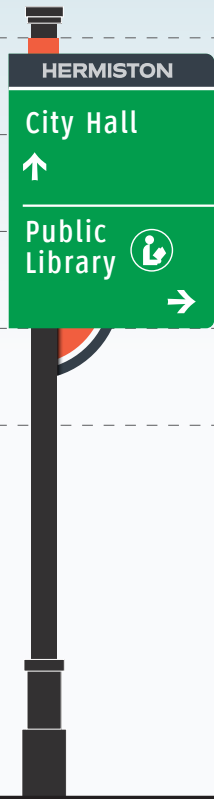
9'-0"

7'-6"

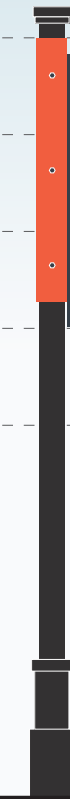
6'-0"



SCALE: 3/4" = 1'-0"



Vehicular Directional (25 MPH & Less)



Side View



Vehicular Directional (25 MPH & More)



Parking Trailblazer



Side View



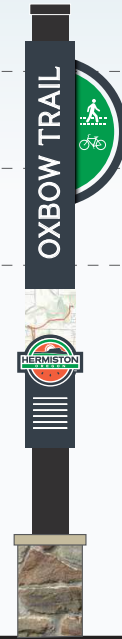
Park Identification



Pedestrian Directional



Banners



Trailhead Marker